

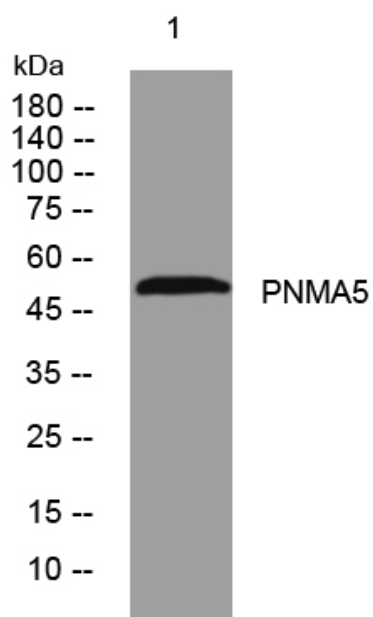


PNMA5 rabbit pAb

Catalog No	YP-Ab-11348
Isotype	IgG
Reactivity	Human; Mouse
Applications	WB
Gene Name	PNMA5 KIAA1934
Protein Name	PNMA5
Immunogen	Synthesized peptide derived from human PNMA5 AA range: 160-210
Specificity	This antibody detects endogenous levels of PNMA5 at Human/Mouse
Formulation	Liquid in PBS containing 50% glycerol, 0.5% BSA and 0.02% sodium azide.
Source	Polyclonal, Rabbit,IgG
Purification	The antibody was affinity-purified from rabbit serum by affinity-chromatography using specific immunogen.
Dilution	WB 1: 500-2000
Concentration	1 mg/ml
Purity	≥90%
Storage Stability	-20°C/1 year
Synonyms	
Observed Band	
Cell Pathway	
Tissue Specificity	Expressed in the brain.
Function	similarity:Belongs to the PNMA family.,
Background	This gene encodes a member of the paraneoplastic Ma antigen protein family. These proteins have been implicated in the development of paraneoplastic disorders resulting from an immune response directed against them. Paraneoplastic disorders are the result of an abnormal immune response to a tumor. Multiple alternatively spliced variants, encoding the same protein, have been identified. [provided by RefSeq, Oct 2011],
matters needing attention	Avoid repeated freezing and thawing!
Usage suggestions	This product can be used in immunological reaction related experiments. For more information, please consult technical personnel.



Products Images



Western blot analysis of lysates from 3T3 cells, primary antibody was diluted at 1:1000, 4° over night