



F111A rabbit pAb

Catalog No	YP-Ab-11336
Isotype	IgG
Reactivity	Human; Mouse
Applications	WB
Gene Name	FAM111A KIAA1895
Protein Name	F111A
Immunogen	Synthesized peptide derived from human F111A AA range: 264-314
Specificity	This antibody detects endogenous levels of F111A at Human/Mouse
Formulation	Liquid in PBS containing 50% glycerol, 0.5% BSA and 0.02% sodium azide.
Source	Polyclonal, Rabbit,IgG
Purification	The antibody was affinity-purified from rabbit serum by affinity-chromatography using specific immunogen.
Dilution	WB 1: 500-2000
Concentration	1 mg/ml
Purity	≥90%
Storage Stability	-20°C/1 year
Synonyms	
Observed Band	
Cell Pathway	Nucleus . Chromosome . Cytoplasm . Mainly localizes to nucleus: colocalizes with PCNA on replication sites. .
Tissue Specificity	
Function	similarity:Belongs to the FAM111 family.,
Background	The protein encoded by this gene is cell-cycle regulated, and has nuclear localization. The C-terminal half of the protein shares homology with trypsin-like peptidases and it contains a PCNA-interacting peptide (PIP) box, that is necessary for its co-localization with proliferating cell nuclear antigen (PCNA). Reduced expression of this gene resulted in DNA replication defects, consistent with the demonstrated role for this gene in Simian Virus 40 (SV40) viral replication. Mutations in this gene have been associated with Kenny-Caffey syndrome (KCS) type 2 and the more severe osteocraniostenosis (OCS, also known as Gracile Bone Dysplasia), both characterized by short stature, hypoparathyroidism, bone development abnormalities, and hypocalcemia. Alternative splicing results in multiple transcript variants. [provided by RefSeq, Aug 2015],

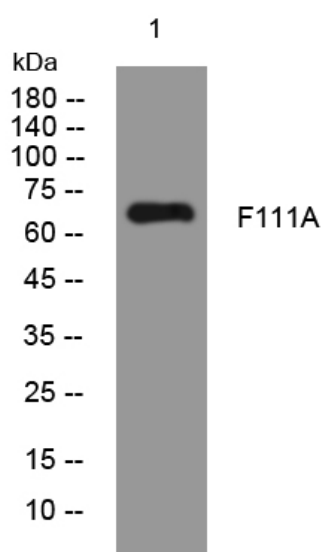
matters needing attention

Avoid repeated freezing and thawing!

Usage suggestions

This product can be used in immunological reaction related experiments. For more information, please consult technical personnel.

Products Images



Western blot analysis of lysates from THP-1 cells, primary antibody was diluted at 1:1000, 4° over night