



MTDC rabbit pAb

Catalog No	YP-Ab-11332
Isotype	IgG
Reactivity	Human; Mouse
Applications	WB;IHC
Gene Name	MTHFD2 NMDMC
Protein Name	MTDC
Immunogen	Synthesized peptide derived from human MTDC AA range: 121-171
Specificity	This antibody detects endogenous levels of MTDC at Human/Mouse
Formulation	Liquid in PBS containing 50% glycerol, 0.5% BSA and 0.02% sodium azide.
Source	Polyclonal, Rabbit,IgG
Purification	The antibody was affinity-purified from rabbit serum by affinity-chromatography using specific immunogen.
Dilution	WB 1:500-2000;IHC-p 1:50-300
Concentration	1 mg/ml
Purity	≥90%
Storage Stability	-20°C/1 year
Synonyms	
Observed Band	
Cell Pathway	Mitochondrion.
Tissue Specificity	
Function	catalytic activity:5,10-methenyltetrahydrofolate + H(2)O = 10-formyltetrahydrofolate.,catalytic activity:5,10-methylenetetrahydrofolate + NAD(+) = 5,10-methenyltetrahydrofolate + NADH.,cofactor:Magnesium.,developmental stage:Expressed only in developing normal tissues.,miscellaneous:This NAD-dependent bifunctional enzyme has very different kinetic properties than the larger NADP-dependent trifunctional enzyme and is unique in that it requires formation of an enzyme-magnesium complex to allow binding of NAD.,similarity:Belongs to the tetrahydrofolate dehydrogenase/cyclohydrolase family.,subunit:Homodimer.,
Background	This gene encodes a nuclear-encoded mitochondrial bifunctional enzyme with methylenetetrahydrofolate dehydrogenase and methenyltetrahydrofolate cyclohydrolase activities. The enzyme functions as a homodimer and is unique in its absolute requirement for magnesium and inorganic phosphate. Formation of the enzyme-magnesium complex allows binding of NAD. Alternative splicing results in two different transcripts, one protein-coding and the other not



protein-coding. This gene has a pseudogene on chromosome 7. [provided by RefSeq, Mar 2009],

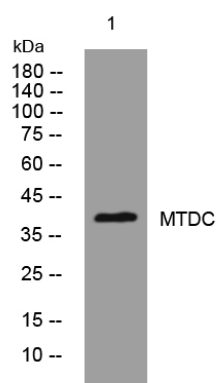
matters needing attention

Avoid repeated freezing and thawing!

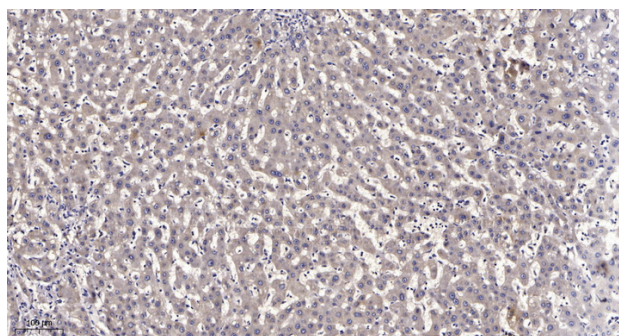
Usage suggestions

This product can be used in immunological reaction related experiments. For more information, please consult technical personnel.

Products Images



Western blot analysis of lysates from 293T cells, primary antibody was diluted at 1:1000, 4° over night



Immunohistochemical analysis of paraffin-embedded human liver cancer. 1, Antibody was diluted at 1:200(4° overnight). 2, Tris-EDTA, pH9.0 was used for antigen retrieval. 3, Secondary antibody was diluted at 1:200(room temperature, 45min).