



SPSY rabbit pAb

Catalog No	YP-Ab-11330
Isotype	IgG
Reactivity	Human; Mouse
Applications	WB;ELISA;IHC
Gene Name	SMS
Protein Name	SPSY
Immunogen	Synthesized peptide derived from human SPSY AA range: 81-131
Specificity	This antibody detects endogenous levels of SPSY at Human/Mouse
Formulation	Liquid in PBS containing 50% glycerol, 0.5% BSA and 0.02% sodium azide.
Source	Polyclonal, Rabbit,IgG
Purification	The antibody was affinity-purified from rabbit serum by affinity-chromatography using specific immunogen.
Dilution	WB 1:500-2000;IHC-p 1:50-300; ELISA 2000-20000
Concentration	1 mg/ml
Purity	≥90%
Storage Stability	-20°C/1 year
Synonyms	
Observed Band	
Cell Pathway	cytosol,extracellular exosome,
Tissue Specificity	
Function	catalytic activity:S-adenosylmethioninamine + spermidine = 5'-methylthioadenosine + spermine.;disease:Defects in SMS are the cause of Snyder-Robinson syndrome (SRS) [MIM:309583]; also called X-linked mental retardation Snyder-Robinson type. SRS is characterized by moderate intellectual deficit, hypotonia, an unsteady gait, osteoporosis, kyphoscoliosis and facial asymmetry. Transmission is X-linked recessive.;domain:Composed of 3 domains: the N-terminal domain has structural similarity to S-adenosylmethionine decarboxylase, the central domain is made up of four beta strands and the C-terminal domain is similar in structure to spermidine synthase. The N- and C-terminal domains are both required for activity.;function:Required for normal viability, growth and fertility.;pathway:Amine and polyamine biosynthesis; spermine biosynthesis; spermine from spermidine: step 1/1.;similarity:Belongs to
Background	This gene encodes a protein belonging to the spermidine/spermin synthase family. Pseudogenes of this gene are located on chromosomes 1, 5, 6 and X. Mutations in this gene are associated with X-linked Snyder-Robinson mental



retardation syndrome. Multiple transcript variants encoding different isoforms have been found for this gene. [provided by RefSeq, May 2012],

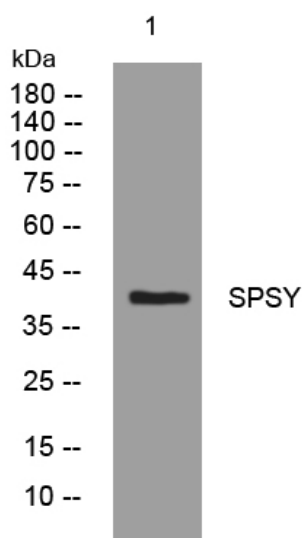
matters needing attention

Avoid repeated freezing and thawing!

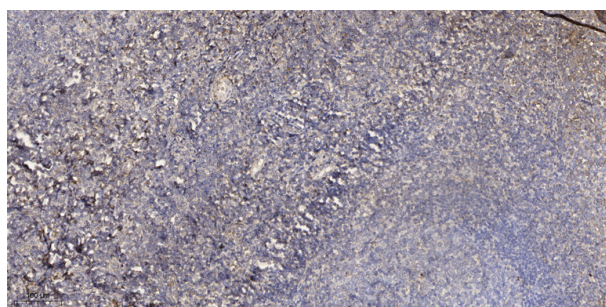
Usage suggestions

This product can be used in immunological reaction related experiments. For more information, please consult technical personnel.

Products Images



Western blot analysis of lysates from CACO2 cells, primary antibody was diluted at 1:1000, 4° over night



Immunohistochemical analysis of paraffin-embedded human tonsil. 1, Antibody was diluted at 1:200(4° overnight). 2, Tris-EDTA, pH9.0 was used for antigen retrieval. 3, Secondary antibody was diluted at 1:200(room temperature, 45min).