

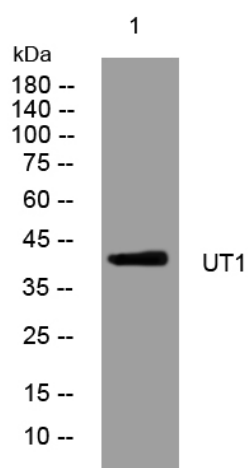


# UT1 rabbit pAb

<b>Catalog No</b>	YP-Ab-11329
<b>Isotype</b>	IgG
<b>Reactivity</b>	Human; Mouse; Rat
<b>Applications</b>	WB
<b>Gene Name</b>	SLC14A1 HUT11 JK RACH1 UT1 UTE
<b>Protein Name</b>	UT1
<b>Immunogen</b>	Synthesized peptide derived from human UT1 AA range: 54-104
<b>Specificity</b>	This antibody detects endogenous levels of UT1 at Human/Mouse/Rat
<b>Formulation</b>	Liquid in PBS containing 50% glycerol, 0.5% BSA and 0.02% sodium azide.
<b>Source</b>	Polyclonal, Rabbit, IgG
<b>Purification</b>	The antibody was affinity-purified from rabbit serum by affinity-chromatography using specific immunogen.
<b>Dilution</b>	WB 1: 500-2000
<b>Concentration</b>	1 mg/ml
<b>Purity</b>	≥90%
<b>Storage Stability</b>	-20°C/1 year
<b>Synonyms</b>	
<b>Observed Band</b>	
<b>Cell Pathway</b>	Cell membrane ; Multi-pass membrane protein . Basolateral cell membrane ; Multi-pass membrane protein . Restricted to the basolateral membrane in various portions of the urothelium. .
<b>Tissue Specificity</b>	Detected in erythrocytes (at protein level). Erythrocytes.
<b>Function</b>	function: Specialized low-affinity urea transporter. Mediates urea transport in erythrocytes., online information: Blood group antigen gene mutation database, polymorphism: SLC14A1 is responsible for the Kidd blood group system. The molecular basis of the Jk(a)/Jk(b) blood group antigens is a single variation in position 280; Asp-280 corresponds to Jk(a) and Asn-280 to Jk(b)., tissue specificity: Erythrocytes.,
<b>Background</b>	The protein encoded by this gene is a membrane transporter that mediates urea transport in erythrocytes. This gene forms the basis for the Kidd blood group system. [provided by RefSeq, Mar 2009],
<b>matters needing attention</b>	Avoid repeated freezing and thawing!

**Usage suggestions**

This product can be used in immunological reaction related experiments. For more information, please consult technical personnel.

**Products Images**

Western blot analysis of lysates from HeLa cells,  
primary antibody was diluted at 1:1000, 4° over night