

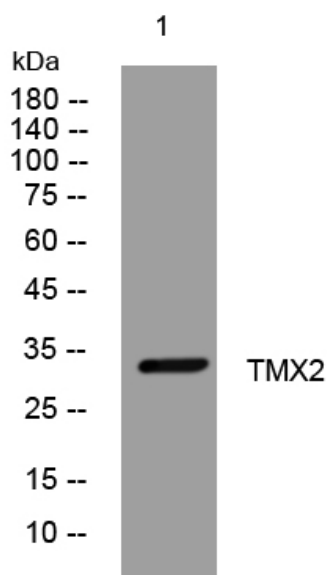


TMX2 rabbit pAb

Catalog No	YP-Ab-11325
Isotype	IgG
Reactivity	Human; Mouse; Rat
Applications	WB
Gene Name	TMX2 TXNDC14 CGI-31 My009 PIG26 PSEC0045 UNQ237/PRO270
Protein Name	TMX2
Immunogen	Synthesized peptide derived from human TMX2 AA range: 41-91
Specificity	This antibody detects endogenous levels of TMX2 at Human/Mouse/Rat
Formulation	Liquid in PBS containing 50% glycerol, 0.5% BSA and 0.02% sodium azide.
Source	Polyclonal, Rabbit, IgG
Purification	The antibody was affinity-purified from rabbit serum by affinity-chromatography using specific immunogen.
Dilution	WB 1: 500-2000
Concentration	1 mg/ml
Purity	≥90%
Storage Stability	-20°C/1 year
Synonyms	
Observed Band	
Cell Pathway	Endoplasmic reticulum membrane ; Single-pass type I membrane protein . Mitochondrion membrane . Localizes to endoplasmic reticulum mitochondria-associated membrane (MAMs) that connect the endoplasmic reticulum and the mitochondria. .
Tissue Specificity	Widely expressed.
Function	domain: The di-lysine motif confers endoplasmic reticulum localization for type I membrane proteins., domain: The thioredoxin domain lacks the 2 redox-active cysteines, suggesting that it lacks thioredoxin activity., similarity: Contains 1 thioredoxin domain., tissue specificity: Widely expressed.,
Background	
matters needing attention	Avoid repeated freezing and thawing!
Usage suggestions	This product can be used in immunological reaction related experiments. For more information, please consult technical personnel.



Products Images



Western blot analysis of lysates from SW480 cells,
primary antibody was diluted at 1:1000, 4° over night