

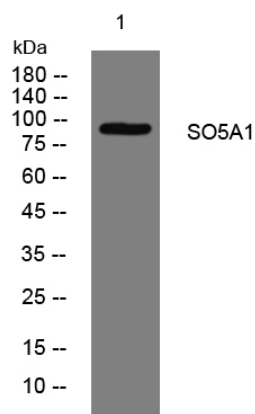


# SO5A1 rabbit pAb

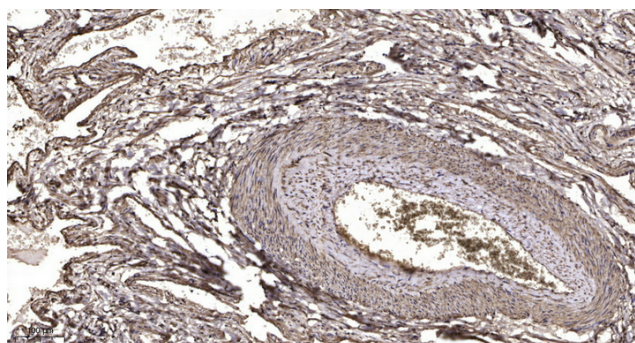
<b>Catalog No</b>	YP-Ab-11313
<b>Isotype</b>	IgG
<b>Reactivity</b>	Human;Rat;Mouse;
<b>Applications</b>	WB;IHC
<b>Gene Name</b>	SLCO5A1 OATP5A1 SLC21A15
<b>Protein Name</b>	SO5A1
<b>Immunogen</b>	Synthesized peptide derived from human SO5A1 AA range: 292-342
<b>Specificity</b>	This antibody detects endogenous levels of SO5A1 at Human
<b>Formulation</b>	Liquid in PBS containing 50% glycerol, 0.5% BSA and 0.02% sodium azide.
<b>Source</b>	Polyclonal, Rabbit,IgG
<b>Purification</b>	The antibody was affinity-purified from rabbit serum by affinity-chromatography using specific immunogen.
<b>Dilution</b>	WB 1:500-2000;IHC-p 1:50-300
<b>Concentration</b>	1 mg/ml
<b>Purity</b>	≥90%
<b>Storage Stability</b>	-20°C/1 year
<b>Synonyms</b>	
<b>Observed Band</b>	
<b>Cell Pathway</b>	Cell membrane; Multi-pass membrane protein.
<b>Tissue Specificity</b>	
<b>Function</b>	similarity:Belongs to the organo anion transporter (TC 2.A.60) family.,
<b>Background</b>	This gene encodes a 12 transmembrane domain protein that is a member of the solute carrier organic anion transporter superfamily. Alternative splicing results in multiple transcript variants. [provided by RefSeq, Mar 2009],
<b>matters needing attention</b>	Avoid repeated freezing and thawing!
<b>Usage suggestions</b>	This product can be used in immunological reaction related experiments. For more information, please consult technical personnel.



## Products Images



Western blot analysis of lysates from HEK293 cells, primary antibody was diluted at 1:1000, 4° over night



Immunohistochemical analysis of paraffin-embedded human oophoroma. 1, Antibody was diluted at 1:200 (4° overnight). 2, Tris-EDTA, pH 9.0 was used for antigen retrieval. 3, Secondary antibody was diluted at 1:200 (room temperature, 45 min).