



# CACB1 rabbit pAb

<b>Catalog No</b>	YP-Ab-11310
<b>Isotype</b>	IgG
<b>Reactivity</b>	Human; Mouse; Rat
<b>Applications</b>	WB
<b>Gene Name</b>	CACNB1 CACNLB1
<b>Protein Name</b>	CACB1
<b>Immunogen</b>	Synthesized peptide derived from human CACB1 AA range: 79-129
<b>Specificity</b>	This antibody detects endogenous levels of CACB1 at Human/Mouse/Rat
<b>Formulation</b>	Liquid in PBS containing 50% glycerol, 0.5% BSA and 0.02% sodium azide.
<b>Source</b>	Polyclonal, Rabbit, IgG
<b>Purification</b>	The antibody was affinity-purified from rabbit serum by affinity-chromatography using specific immunogen.
<b>Dilution</b>	WB 1: 500-2000
<b>Concentration</b>	1 mg/ml
<b>Purity</b>	≥90%
<b>Storage Stability</b>	-20°C/1 year
<b>Synonyms</b>	
<b>Observed Band</b>	
<b>Cell Pathway</b>	Cell membrane, sarcolemma ; Peripheral membrane protein ; Cytoplasmic side . Cell membrane ; Peripheral membrane protein .
<b>Tissue Specificity</b>	Detected in heart ventricle (at protein level) (PubMed:15615847). Isoform 1 and isoform 3 are expressed in brain, heart, spleen, central nervous system and neuroblastoma cells. Isoform 2 is expressed in skeletal muscle.
<b>Function</b>	function: The beta subunit of voltage-dependent calcium channels contributes to the function of the calcium channel by increasing peak calcium current, shifting the voltage dependencies of activation and inactivation, modulating G protein inhibition and controlling the alpha-1 subunit membrane targeting., similarity: Belongs to the calcium channel beta subunit family., similarity: Contains 1 SH3 domain., subunit: The L-type calcium channel is composed of four subunits: alpha-1, alpha-2, beta and gamma. Interacts with JSRP1., tissue specificity: Expressed in brain, heart and spleen (isoform 1 and 3) and in skeletal muscle (isoform 2).,
<b>Background</b>	The protein encoded by this gene belongs to the calcium channel beta subunit family. It plays an important role in the calcium channel by modulating G protein inhibition, increasing peak calcium current, controlling the alpha-1 subunit membrane targeting and shifting the voltage dependence of activation and inactivation. Alternative splicing occurs at this locus and three transcript variants

encoding three distinct isoforms have been identified. [provided by RefSeq, Jul 2008],

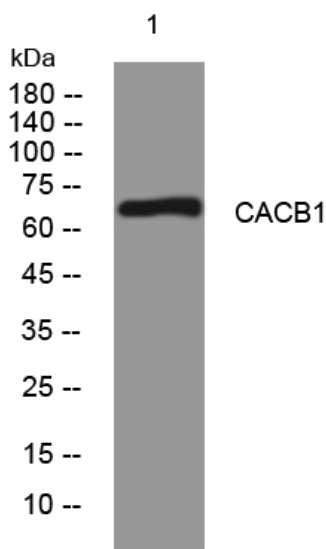
**matters needing attention**

Avoid repeated freezing and thawing!

**Usage suggestions**

This product can be used in immunological reaction related experiments. For more information, please consult technical personnel.

## Products Images



Western blot analysis of lysates from U2OS cells, primary antibody was diluted at 1:1000, 4° over night