

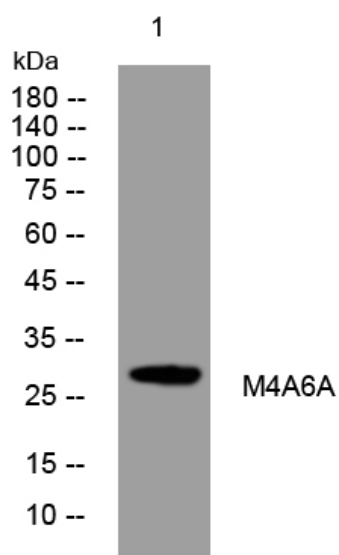


M4A6A rabbit pAb

Catalog No	YP-Ab-11308
Isotype	IgG
Reactivity	Human;Rat;Mouse;
Applications	WB
Gene Name	MS4A6A 4SPAN3 CD20L3 MS4A6 CDA01 MSTP090
Protein Name	M4A6A
Immunogen	Synthesized peptide derived from human M4A6A AA range: 8-58
Specificity	This antibody detects endogenous levels of M4A6A at Human
Formulation	Liquid in PBS containing 50% glycerol, 0.5% BSA and 0.02% sodium azide.
Source	Polyclonal, Rabbit,IgG
Purification	The antibody was affinity-purified from rabbit serum by affinity-chromatography using specific immunogen.
Dilution	WB 1: 500-2000
Concentration	1 mg/ml
Purity	≥90%
Storage Stability	-20°C/1 year
Synonyms	
Observed Band	
Cell Pathway	Membrane; Multi-pass membrane protein.
Tissue Specificity	Variable expression in some B-cell, myelomonocytic, and erythroleukemia cell lines.
Function	function:May be involved in signal transduction as a component of a multimeric receptor complex.,similarity:Belongs to the MS4A family.,tissue specificity:Variable expression in some B-cell, myelomonocytic, and erythroleukemia cell lines.,
Background	This gene encodes a member of the membrane-spanning 4A gene family. Members of this nascent protein family are characterized by common structural features and similar intron/exon splice boundaries and display unique expression patterns among hematopoietic cells and nonlymphoid tissues. The gene encoding this protein is localized to 11q12.1, among a cluster of family members. Alternative splicing of this gene results in several transcript variants that encode different protein isoforms. [provided by RefSeq, Oct 2011],
matters needing attention	Avoid repeated freezing and thawing!

**Usage suggestions**

This product can be used in immunological reaction related experiments. For more information, please consult technical personnel.

Products Images

Western blot analysis of lysates from HEK293 cells, primary antibody was diluted at 1:1000, 4° over night