

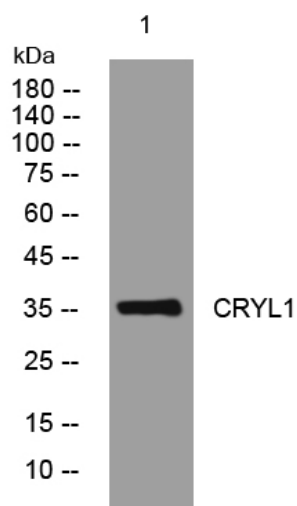


# CRYL1 rabbit pAb

<b>Catalog No</b>	YP-Ab-11300
<b>Isotype</b>	IgG
<b>Reactivity</b>	Human; Mouse; Rat
<b>Applications</b>	WB
<b>Gene Name</b>	CRYL1 CRY
<b>Protein Name</b>	CRYL1
<b>Immunogen</b>	Synthesized peptide derived from human CRYL1 AA range: 50-100
<b>Specificity</b>	This antibody detects endogenous levels of CRYL1 at Human/Mouse/Rat
<b>Formulation</b>	Liquid in PBS containing 50% glycerol, 0.5% BSA and 0.02% sodium azide.
<b>Source</b>	Polyclonal, Rabbit, IgG
<b>Purification</b>	The antibody was affinity-purified from rabbit serum by affinity-chromatography using specific immunogen.
<b>Dilution</b>	WB 1: 500-2000
<b>Concentration</b>	1 mg/ml
<b>Purity</b>	≥90%
<b>Storage Stability</b>	-20°C/1 year
<b>Synonyms</b>	
<b>Observed Band</b>	
<b>Cell Pathway</b>	Cytoplasm .
<b>Tissue Specificity</b>	Widely expressed, with highest levels in liver and kidney.
<b>Function</b>	sequence caution: Unknown reasons., similarity: Belongs to the 3-hydroxyacyl-CoA dehydrogenase family., tissue specificity: Widely expressed, with highest levels in liver and kidney.,
<b>Background</b>	The uronate cycle functions as an alternative glucose metabolic pathway, accounting for about 5% of daily glucose catabolism. The product of this gene catalyzes the dehydrogenation of L-gulonate into dehydro-L-gulonate in the uronate cycle. The enzyme requires NAD(H) as a coenzyme, and is inhibited by inorganic phosphate. A similar gene in the rabbit is thought to serve a structural role in the lens of the eye. [provided by RefSeq, Jul 2008],
<b>matters needing attention</b>	Avoid repeated freezing and thawing!

**Usage suggestions**

This product can be used in immunological reaction related experiments. For more information, please consult technical personnel.

**Products Images**

Western blot analysis of lysates from K562 cells,  
primary antibody was diluted at 1:1000, 4°over night