

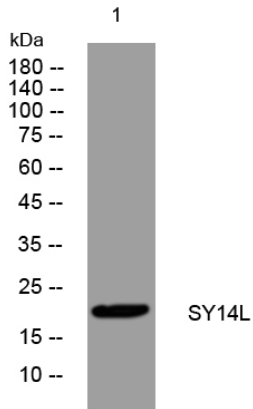


SY14L rabbit pAb

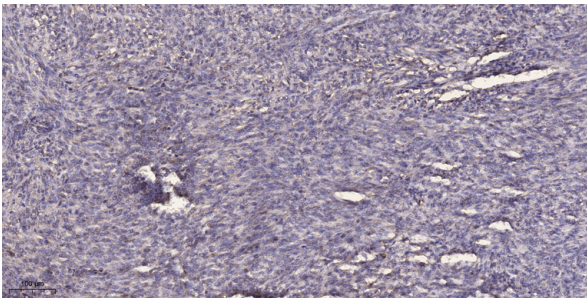
Catalog No	YP-Ab-11297
Isotype	IgG
Reactivity	Human;Rat;Mouse;
Applications	WB;ELISA;IHC
Gene Name	SYT14L SYTDEP
Protein Name	SY14L
Immunogen	Synthesized peptide derived from human SY14L AA range: 85-135
Specificity	This antibody detects endogenous levels of SY14L at Human
Formulation	Liquid in PBS containing 50% glycerol, 0.5% BSA and 0.02% sodium azide.
Source	Polyclonal, Rabbit,IgG
Purification	The antibody was affinity-purified from rabbit serum by affinity-chromatography using specific immunogen.
Dilution	WB 1:500-2000;IHC-p 1:50-300; ELISA 2000-20000
Concentration	1 mg/ml
Purity	≥90%
Storage Stability	-20°C/1 year
Synonyms	
Observed Band	
Cell Pathway	plasma membrane,
Tissue Specificity	Expressed in mature peripheral blood neutrophils (at protein level) (PubMed:16376304). Expressed in heart, pancreas, liver and skeletal muscle (PubMed:11543631). Expressed in umbilical vein endothelial cells and melanocytes (PubMed:23999003).
Function	
Background	
matters needing attention	Avoid repeated freezing and thawing!
Usage suggestions	This product can be used in immunological reaction related experiments. For more information, please consult technical personnel.



Products Images



Western blot analysis of lysates from MCF-7 cells, primary antibody was diluted at 1:1000, 4° over night



Immunohistochemical analysis of paraffin-embedded human Colon cancer. 1, Antibody was diluted at 1:200(4° overnight). 2, Tris-EDTA,pH9.0 was used for antigen retrieval. 3,Secondary antibody was diluted at 1:200(room temperature, 45min).