

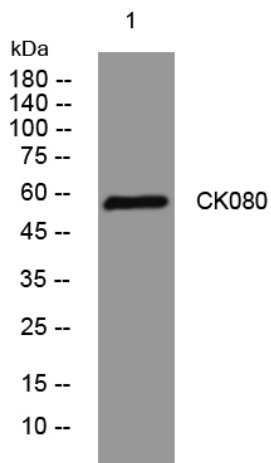


# CK080 rabbit pAb

<b>Catalog No</b>	YP-Ab-11285
<b>Isotype</b>	IgG
<b>Reactivity</b>	Human;Rat;Mouse;
<b>Applications</b>	WB
<b>Gene Name</b>	C11orf80
<b>Protein Name</b>	CK080
<b>Immunogen</b>	Synthesized peptide derived from human CK080 AA range: 93-143
<b>Specificity</b>	This antibody detects endogenous levels of CK080 at Human
<b>Formulation</b>	Liquid in PBS containing 50% glycerol, 0.5% BSA and 0.02% sodium azide.
<b>Source</b>	Polyclonal, Rabbit,IgG
<b>Purification</b>	The antibody was affinity-purified from rabbit serum by affinity-chromatography using specific immunogen.
<b>Dilution</b>	WB 1: 500-2000
<b>Concentration</b>	1 mg/ml
<b>Purity</b>	≥90%
<b>Storage Stability</b>	-20°C/1 year
<b>Synonyms</b>	
<b>Observed Band</b>	
<b>Cell Pathway</b>	Chromosome . Localizes to meiotic chromosomes. .
<b>Tissue Specificity</b>	Detected in lung, spleen,colon and in skeletal muscle. Expressed in the ovaries, Fallopian tubes and uterus (PubMed:30388401).
<b>Function</b>	
<b>Background</b>	
<b>matters needing attention</b>	Avoid repeated freezing and thawing!
<b>Usage suggestions</b>	This product can be used in immunological reaction related experiments. For more information, please consult technical personnel.



## Products Images



Western blot analysis of lysates from U2OS cells,  
primary antibody was diluted at 1:1000, 4° over night