



# AP2B1 rabbit pAb

<b>Catalog No</b>	YP-Ab-11271
<b>Isotype</b>	IgG
<b>Reactivity</b>	Human; Mouse; Rat
<b>Applications</b>	WB
<b>Gene Name</b>	AP2B1 ADTB2 CLAPB1
<b>Protein Name</b>	AP2B1
<b>Immunogen</b>	Synthesized peptide derived from human AP2B1 AA range: 70-120
<b>Specificity</b>	This antibody detects endogenous levels of AP2B1 at Human/Mouse/Rat
<b>Formulation</b>	Liquid in PBS containing 50% glycerol, 0.5% BSA and 0.02% sodium azide.
<b>Source</b>	Polyclonal, Rabbit, IgG
<b>Purification</b>	The antibody was affinity-purified from rabbit serum by affinity-chromatography using specific immunogen.
<b>Dilution</b>	WB 1: 500-2000
<b>Concentration</b>	1 mg/ml
<b>Purity</b>	≥90%
<b>Storage Stability</b>	-20°C/1 year
<b>Synonyms</b>	
<b>Observed Band</b>	
<b>Cell Pathway</b>	Cell membrane . Membrane, coated pit ; Peripheral membrane protein ; Cytoplasmic side . AP-2 appears to be excluded from internalizing CCVs and to disengage from sites of endocytosis seconds before internalization of the nascent CCV.
<b>Tissue Specificity</b>	Expressed in the brain (at protein level).
<b>Function</b>	function: Component of the adaptor complexes which link clathrin to receptors in coated vesicles. Clathrin-associated protein complexes are believed to interact with the cytoplasmic tails of membrane proteins, leading to their selection and concentration. AP2B1 is a subunit of the plasma membrane adaptor. The complex binds polyphosphoinositides., similarity: Belongs to the adaptor complexes large subunit family., subcellular location: Component of the coat surrounding the cytoplasmic face of coated vesicles in the plasma membrane., subunit: Adaptor protein complex 2 (AP-2) is a heterotetramer composed of two large adaptins (alpha-type subunit AP2A1 or AP2A2 and beta-type subunit AP2B1), a medium adaptin (mu-type subunit AP2M1) and a small adaptin (sigma-type subunit AP2S1). Binds EPN1, EPS15, SNAP91 and clathrin.,
<b>Background</b>	The protein encoded by this gene is one of two large chain components of the assembly protein complex 2, which serves to link clathrin to receptors in coated



vesicles. The encoded protein is found on the cytoplasmic face of coated vesicles in the plasma membrane. Two transcript variants encoding different isoforms have been found for this gene. [provided by RefSeq, Jul 2008],

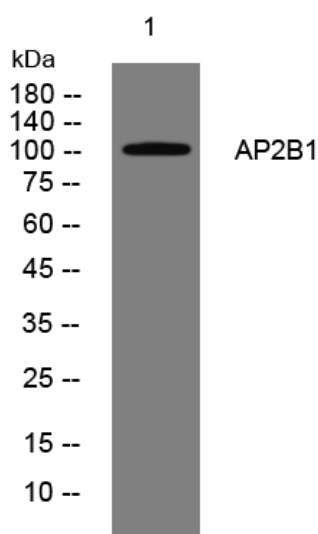
#### matters needing attention

Avoid repeated freezing and thawing!

#### Usage suggestions

This product can be used in immunological reaction related experiments. For more information, please consult technical personnel.

### Products Images



Western blot analysis of lysates from HpeG2 cells, primary antibody was diluted at 1:1000, 4° over night