

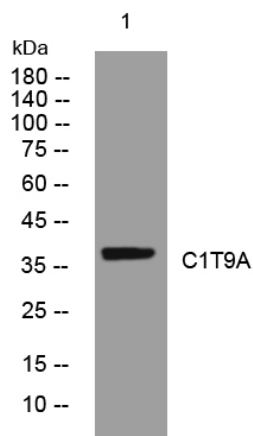


C1T9A rabbit pAb

Catalog No	YP-Ab-11269
Isotype	IgG
Reactivity	Human;Rat;Mouse;
Applications	WB
Gene Name	C1QTNF9 C1QTNF9A UNQ6503/PRO21380
Protein Name	C1T9A
Immunogen	Synthesized peptide derived from human C1T9A AA range: 28-78
Specificity	This antibody detects endogenous levels of C1T9A at Human
Formulation	Liquid in PBS containing 50% glycerol, 0.5% BSA and 0.02% sodium azide.
Source	Polyclonal, Rabbit,IgG
Purification	The antibody was affinity-purified from rabbit serum by affinity-chromatography using specific immunogen.
Dilution	WB 1: 500-2000
Concentration	1 mg/ml
Purity	≥90%
Storage Stability	-20°C/1 year
Synonyms	
Observed Band	
Cell Pathway	Secreted .
Tissue Specificity	Expressed predominantly in adipose tissue.
Function	similarity:Contains 1 C1q domain.,similarity:Contains 3 collagen-like domains.,
Background	
matters needing attention	Avoid repeated freezing and thawing!
Usage suggestions	This product can be used in immunological reaction related experiments. For more information, please consult technical personnel.



Products Images



Western blot analysis of lysates from Jarkat cells,
primary antibody was diluted at 1:1000, 4°over night