



# RNAS7 rabbit pAb

<b>Catalog No</b>	YP-Ab-11238
<b>Isotype</b>	IgG
<b>Reactivity</b>	Human;Rat;Mouse;
<b>Applications</b>	WB;ELISA;IHC
<b>Gene Name</b>	RNASE7 UNQ2516/PRO6006
<b>Protein Name</b>	RNAS7
<b>Immunogen</b>	Synthesized peptide derived from human RNAS7 AA range: 37-87
<b>Specificity</b>	This antibody detects endogenous levels of RNAS7 at Human
<b>Formulation</b>	Liquid in PBS containing 50% glycerol, 0.5% BSA and 0.02% sodium azide.
<b>Source</b>	Polyclonal, Rabbit,IgG
<b>Purification</b>	The antibody was affinity-purified from rabbit serum by affinity-chromatography using specific immunogen.
<b>Dilution</b>	WB 1:500-2000;IHC-p 1:50-300; ELISA 2000-20000
<b>Concentration</b>	1 mg/ml
<b>Purity</b>	≥90%
<b>Storage Stability</b>	-20°C/1 year
<b>Synonyms</b>	
<b>Observed Band</b>	
<b>Cell Pathway</b>	Secreted . Detected in urine. .
<b>Tissue Specificity</b>	Expressed in collecting ducts in kidney, and in apical uroepithelium in bladder (at protein level) (PubMed:25075772). Expressed in various epithelial tissues including skin, respiratory tract, genito-urinary tract and, at a low level, in the gut (PubMed:12244054). Expressed in liver, kidney, skeletal muscle and heart (PubMed:12527768).
<b>Function</b>	function:Exhibits a potent RNase activity. Has broad-spectrum antimicrobial activity against many pathogenic microorganisms and remarkably potent activity (lethal dose of 90% < 30 nM) against a vancomycin resistant Enterococcus faecium.,similarity:Belongs to the pancreatic ribonuclease family.,tissue specificity:Expressed in various epithelial tissues including skin, respiratory tract, genito-urinary tract and, at a low level, in the gut. Expressed in liver, kidney, skeletal muscle and heart.,
<b>Background</b>	The protein encoded by this gene belongs to the pancreatic ribonuclease family, a subset of the ribonuclease A superfamily. The protein has broad-spectrum antimicrobial activity against bacteria and fungi. [provided by RefSeq, Oct 2014],



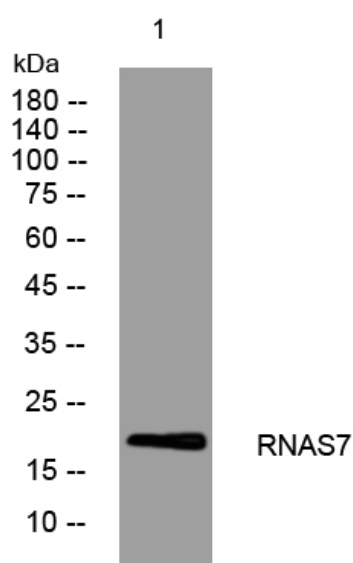
## matters needing attention

Avoid repeated freezing and thawing!

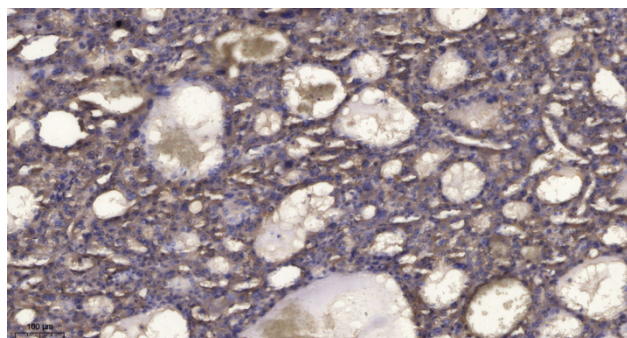
## Usage suggestions

This product can be used in immunological reaction related experiments. For more information, please consult technical personnel.

## Products Images



Western blot analysis of lysates from HpeG2 cells, primary antibody was diluted at 1:1000, 4° over night



Immunohistochemical analysis of paraffin-embedded human liver cancer. 1, Antibody was diluted at 1:200(4° overnight). 2, Tris-EDTA, pH9.0 was used for antigen retrieval. 3, Secondary antibody was diluted at 1:200(room temperature, 45min).