



# AK1BA rabbit pAb

<b>Catalog No</b>	YP-Ab-11233
<b>Isotype</b>	IgG
<b>Reactivity</b>	Human;Rat;Mouse;
<b>Applications</b>	WB
<b>Gene Name</b>	AKR1B10 AKR1B11
<b>Protein Name</b>	AK1BA
<b>Immunogen</b>	Synthesized peptide derived from human AK1BA AA range: 124-174
<b>Specificity</b>	This antibody detects endogenous levels of AK1BA at Human
<b>Formulation</b>	Liquid in PBS containing 50% glycerol, 0.5% BSA and 0.02% sodium azide.
<b>Source</b>	Polyclonal, Rabbit,IgG
<b>Purification</b>	The antibody was affinity-purified from rabbit serum by affinity-chromatography using specific immunogen.
<b>Dilution</b>	WB 1: 500-2000
<b>Concentration</b>	1 mg/ml
<b>Purity</b>	≥90%
<b>Storage Stability</b>	-20°C/1 year
<b>Synonyms</b>	
<b>Observed Band</b>	
<b>Cell Pathway</b>	Lysosome . Secreted . Secreted through a lysosome-mediated non-classical pathway.
<b>Tissue Specificity</b>	Found in many tissues. Highly expressed in small intestine, colon and adrenal gland.
<b>Function</b>	enzyme regulation:Inhibited by tolrestat.,function:Acts as all-trans-retinaldehyde reductase. Can efficiently reduce aliphatic and aromatic aldehydes, and is less active on hexoses (in vitro). May be responsible for detoxification of reactive aldehydes in the digested food before the nutrients are passed on to other organs.,similarity:Belongs to the aldo/keto reductase family.,tissue specificity:Found in many tissues. Highly expressed in small intestine, colon and adrenal gland.,
<b>Background</b>	This gene encodes a member of the aldo/keto reductase superfamily, which consists of more than 40 known enzymes and proteins. This member can efficiently reduce aliphatic and aromatic aldehydes, and it is less active on hexoses. It is highly expressed in adrenal gland, small intestine, and colon, and may play an important role in liver carcinogenesis. [provided by RefSeq, Jul 2008],

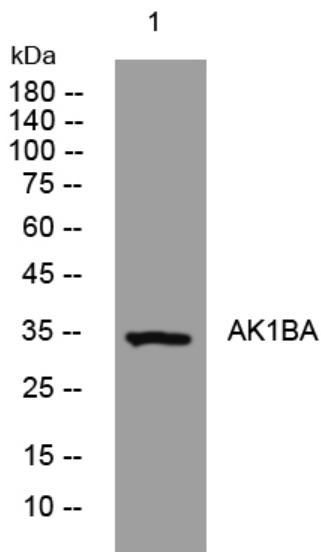
**matters needing attention**

Avoid repeated freezing and thawing!

**Usage suggestions**

This product can be used in immunological reaction related experiments. For more information, please consult technical personnel.

## Products Images



Western blot analysis of lysates from K562 cells, primary antibody was diluted at 1:1000, 4° over night