



# CBY1 rabbit pAb

<b>Catalog No</b>	YP-Ab-11232
<b>Isotype</b>	IgG
<b>Reactivity</b>	Human; Mouse; Rat
<b>Applications</b>	WB
<b>Gene Name</b>	CBY1 ARB1 C22orf2 CBY PGEA1 HRIHFB2025
<b>Protein Name</b>	CBY1
<b>Immunogen</b>	Synthesized peptide derived from human CBY1 AA range: 71-121
<b>Specificity</b>	This antibody detects endogenous levels of CBY1 at Human/Mouse/Rat
<b>Formulation</b>	Liquid in PBS containing 50% glycerol, 0.5% BSA and 0.02% sodium azide.
<b>Source</b>	Polyclonal, Rabbit, IgG
<b>Purification</b>	The antibody was affinity-purified from rabbit serum by affinity-chromatography using specific immunogen.
<b>Dilution</b>	WB 1: 500-2000
<b>Concentration</b>	1 mg/ml
<b>Purity</b>	≥90%
<b>Storage Stability</b>	-20°C/1 year
<b>Synonyms</b>	
<b>Observed Band</b>	
<b>Cell Pathway</b>	Nucleus speckle . Cytoplasm, cytoskeleton, cilium basal body . Cytoplasm, cytoskeleton, microtubule organizing center, centrosome, centriole . Golgi apparatus. Golgi apparatus, trans-Golgi network .
<b>Tissue Specificity</b>	Widely expressed. Expressed at higher levels in heart, skeletal muscle, kidney and placenta. Also found in brain, lung, liver and testis. Significantly down-regulated in thyroid and metastatic uterine tumors.
<b>Function</b>	function: Inhibits the Wnt/Wingless pathway by binding to beta-catenin and inhibiting beta-catenin-mediated transcriptional activation through competition with TCF/LEF transcription factors. Has also been shown to play a role in regulating the intracellular trafficking of polycystin-2/PKD2 and possibly of other intracellular proteins. Promotes adipocyte and cardiomyocyte differentiation. miscellaneous: Chibby is Japanese for 'small'; the gene was so named for the RNAi phenotype seen in flies. similarity: Belongs to the chibby family. subcellular location: Nuclear, in a punctate manner. Also found in the trans-Golgi. subunit: Homodimer; interacts with polycystin-2/PKD2 and GM130. Interacts with the C-terminal region of beta-catenin. tissue specificity: Widely expressed. Expressed at higher levels in heart, skeletal muscle, kidney and placenta. Also found in brain, lung, liver and testis. Signif



## Background

Beta-catenin is a transcriptional activator and oncoprotein involved in the development of several cancers. The protein encoded by this gene interacts directly with the C-terminal region of beta-catenin, inhibiting oncogenic beta-catenin-mediated transcriptional activation by competing with transcription factors for binding to beta-catenin. Two transcript variants encoding different isoforms have been found for this gene. [provided by RefSeq, Jul 2008],

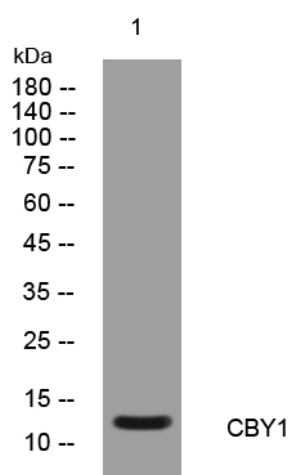
## matters needing attention

Avoid repeated freezing and thawing!

## Usage suggestions

This product can be used in immunological reaction related experiments. For more information, please consult technical personnel.

## Products Images



Western blot analysis of lysates from KB cells, primary antibody was diluted at 1:1000, 4° over night