

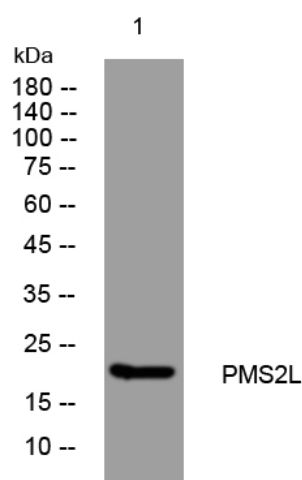


PMS2L rabbit pAb

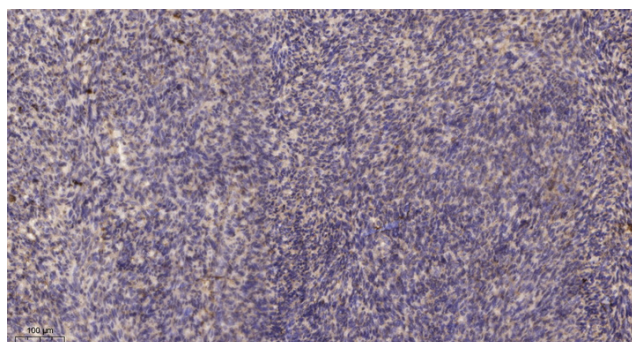
Catalog No	YP-Ab-11222
Isotype	IgG
Reactivity	Human;Rat;Mouse;
Applications	WB;IHC
Gene Name	PMS2CL
Protein Name	PMS2L
Immunogen	Synthesized peptide derived from human PMS2L AA range: 123-173
Specificity	This antibody detects endogenous levels of PMS2L at Human
Formulation	Liquid in PBS containing 50% glycerol, 0.5% BSA and 0.02% sodium azide.
Source	Polyclonal, Rabbit,IgG
Purification	The antibody was affinity-purified from rabbit serum by affinity-chromatography using specific immunogen.
Dilution	WB 1:500-2000;IHC-p 1:50-300
Concentration	1 mg/ml
Purity	≥90%
Storage Stability	-20°C/1 year
Synonyms	
Observed Band	
Cell Pathway	mismatch repair complex,
Tissue Specificity	
Function	caution:According to PubMed:15077197, it is a pseudogene. However, a peptide specific to this protein was identified by mass spectrometry (PubMed:17525332). Given that the product described by PubMed:15077197 is located downstream and on another frame of the transcript, it may explain why PubMed:15256438 could not detect this protein on a Western blot.,PTM:Phosphorylated upon DNA damage, probably by ATM or ATR.,sequence caution:Wrong choice of transcript.,similarity:Belongs to the DNA mismatch repair mutL/hexB family.,
Background	
matters needing attention	Avoid repeated freezing and thawing!

**Usage suggestions**

This product can be used in immunological reaction related experiments. For more information, please consult technical personnel.

Products Images

Western blot analysis of lysates from KB cells, primary antibody was diluted at 1:1000, 4° over night



Immunohistochemical analysis of paraffin-embedded human uterus. 1, Antibody was diluted at 1:200(4° overnight). 2, Tris-EDTA, pH9.0 was used for antigen retrieval. 3, Secondary antibody was diluted at 1:200(room temperature, 45min).