



# PRDM7 rabbit pAb

<b>Catalog No</b>	YP-Ab-11217
<b>Isotype</b>	IgG
<b>Reactivity</b>	Human;Rat;Mouse;
<b>Applications</b>	WB;ELISA;IHC
<b>Gene Name</b>	PRDM7 PFM4
<b>Protein Name</b>	PRDM7
<b>Immunogen</b>	Synthesized peptide derived from human PRDM7 AA range: 28-78
<b>Specificity</b>	This antibody detects endogenous levels of PRDM7 at Human
<b>Formulation</b>	Liquid in PBS containing 50% glycerol, 0.5% BSA and 0.02% sodium azide.
<b>Source</b>	Polyclonal, Rabbit,IgG
<b>Purification</b>	The antibody was affinity-purified from rabbit serum by affinity-chromatography using specific immunogen.
<b>Dilution</b>	WB 1:500-2000;IHC-p 1:50-300; ELISA 2000-20000
<b>Concentration</b>	1 mg/ml
<b>Purity</b>	≥90%
<b>Storage Stability</b>	-20°C/1 year
<b>Synonyms</b>	
<b>Observed Band</b>	
<b>Cell Pathway</b>	Nucleus . Chromosome .
<b>Tissue Specificity</b>	
<b>Function</b>	catalytic activity:S-adenosyl-L-methionine + histone L-lysine = S-adenosyl-L-homocysteine + histone N(6)-methyl-L-lysine.,function:Probable histone methyltransferase.,miscellaneous:The mouse orthologous protein seems not to exist. According to PubMed:17916234, human PRDM7 and PRDM9 genes, a pair of close paralogs corresponding to a single mouse gene Prdm9, were generated by a recent gene duplication event after the divergence of the ancestors of human and mouse.,similarity:Contains 1 KRAB-related domain.,similarity:Contains 1 SET domain.,
<b>Background</b>	This gene encodes a member of a family of proteins that may have roles in transcription and other nuclear processes. The encoded protein contains a KRAB (Kruppel-associated box) domain -A box and a SET (Su(var)3-9, Enhancer-of-zeste, Trithorax) domain and may function as a histone methyltransferase. [provided by RefSeq, Aug 2013],



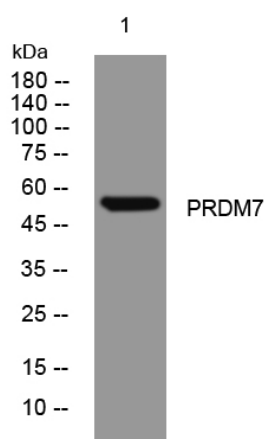
### matters needing attention

Avoid repeated freezing and thawing!

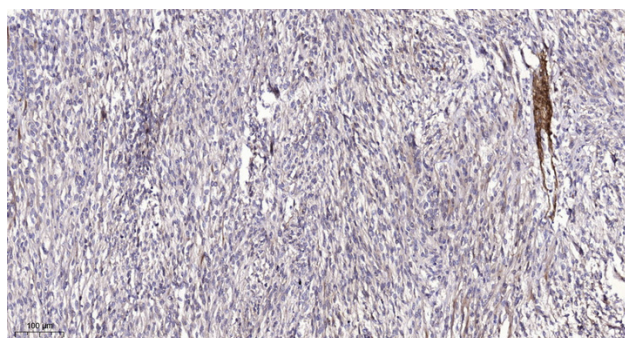
### Usage suggestions

This product can be used in immunological reaction related experiments. For more information, please consult technical personnel.

## Products Images



Western blot analysis of lysates from HCT116 cells, primary antibody was diluted at 1:1000, 4° over night



Immunohistochemical analysis of paraffin-embedded human Colon cancer. 1, Antibody was diluted at 1:200(4° overnight). 2, Tris-EDTA, pH9.0 was used for antigen retrieval. 3, Secondary antibody was diluted at 1:200(room temperature, 45min).