



LTC4S rabbit pAb

Catalog No	YP-Ab-11216
Isotype	IgG
Reactivity	Human; Mouse; Rat
Applications	WB
Gene Name	LTC4S
Protein Name	LTC4S
Immunogen	Synthesized peptide derived from human LTC4S AA range: 29-79
Specificity	This antibody detects endogenous levels of LTC4S at Human/Mouse/Rat
Formulation	Liquid in PBS containing 50% glycerol, 0.5% BSA and 0.02% sodium azide.
Source	Polyclonal, Rabbit, IgG
Purification	The antibody was affinity-purified from rabbit serum by affinity-chromatography using specific immunogen.
Dilution	WB 1: 500-2000
Concentration	1 mg/ml
Purity	≥90%
Storage Stability	-20°C/1 year
Synonyms	
Observed Band	
Cell Pathway	Nucleus outer membrane ; Multi-pass membrane protein. Endoplasmic reticulum membrane ; Multi-pass membrane protein. Nucleus membrane ; Multi-pass membrane protein.
Tissue Specificity	Detected in lung, platelets and the myelogenous leukemia cell line KG-1 (at protein level). LTC4S activity is present in eosinophils, basophils, mast cells, certain phagocytic mononuclear cells, endothelial cells, vascular smooth muscle cells and platelets.
Function	catalytic activity:Leukotriene C(4) = leukotriene A(4) + glutathione.,disease:Defects in LTC4S are the cause of leukotriene C4 synthase deficiency (LTC4 synthase deficiency) [MIM:246530]. LTC4 synthase deficiency is a fatal neurometabolic developmental disorder. It is associated with muscular hypotonia, psychomotor retardation, failure to thrive, and microcephaly.,function:Catalyzes the conjugation of leukotriene A4 with reduced glutathione to form leukotriene C4.,similarity:Belongs to the MAPEG family.,subunit:Homotrimer. Interacts with ALOX5AP and ALOX5.,tissue specificity:Detected in lung, platelets and the myelogenous leukemia cell line KG-1 (at protein level). LTC4S activity is present in eosinophils, basophils, mast cells, certain phagocytic mononuclear cells, endothelial cells, vascular smooth muscle cells and platelets.,



Background

The MAPEG (Membrane Associated Proteins in Eicosanoid and Glutathione metabolism) family includes a number of human proteins, several of which are involved the production of leukotrienes. This gene encodes an enzyme that catalyzes the first step in the biosynthesis of cysteinyl leukotrienes, potent biological compounds derived from arachidonic acid. Leukotrienes have been implicated as mediators of anaphylaxis and inflammatory conditions such as human bronchial asthma. This protein localizes to the nuclear envelope and adjacent endoplasmic reticulum. [provided by RefSeq, Jul 2008],

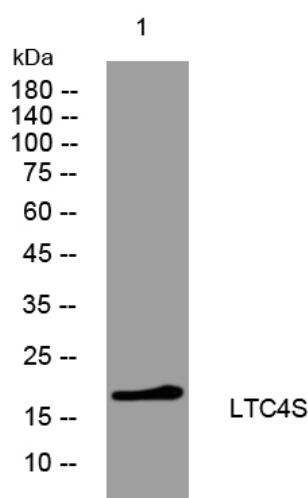
matters needing attention

Avoid repeated freezing and thawing!

Usage suggestions

This product can be used in immunological reaction related experiments. For more information, please consult technical personnel.

Products Images



Western blot analysis of lysates from 293T cells, primary antibody was diluted at 1:1000, 4° over night