

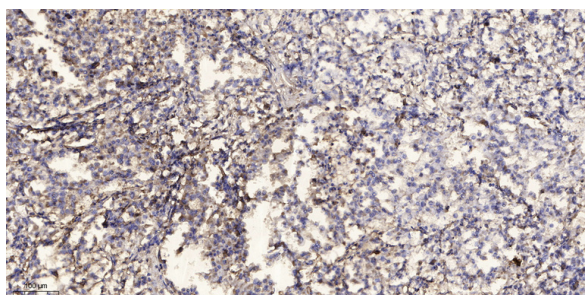


PYDC1 rabbit pAb

Catalog No	YP-Ab-11214
Isotype	IgG
Reactivity	Human;Rat;Mouse;
Applications	IHC;IF
Gene Name	PYDC1 ASC2 ASCI POP1 PYC1
Protein Name	PYDC1
Immunogen	Synthesized peptide derived from human PYDC1 AA range: 25-75
Specificity	This antibody detects endogenous levels of PYDC1 at Human
Formulation	Liquid in PBS containing 50% glycerol, 0.5% BSA and 0.02% sodium azide.
Source	Polyclonal, Rabbit,IgG
Purification	The antibody was affinity-purified from rabbit serum by affinity-chromatography using specific immunogen.
Dilution	IHC-p 1: 50-200. IF 1:50-200
Concentration	1 mg/ml
Purity	≥90%
Storage Stability	-20°C/1 year
Synonyms	
Observed Band	
Cell Pathway	Cytoplasm . Recruited to specks formed by PYCARD within the cytoplasm. .
Tissue Specificity	Predominantly expressed in monocytes, macrophages and granulocytes.
Function	function:Associates with apoptosis-associated specklike protein containing a CARD domain (ASC) and modulates its ability to collaborate with pyrin and cryopyrin in NF-kappa-B and pro-caspase-1 activation. Suppresses kinase activity of NF-kappa-B inhibitor kinase (IKK) complex, expression of NF-kappa-B inducible genes and inhibits NF-kappa-B activation by cytokines and LPS.,PTM:Phosphorylated.,similarity:Contains 1 DAPIN domain.,subunit:Interacts with PYCARD/ASC.,tissue specificity:Predominantly expressed in monocytes, macrophages and granulocytes.,
Background	
matters needing attention	Avoid repeated freezing and thawing!

**Usage suggestions**

This product can be used in immunological reaction related experiments. For more information, please consult technical personnel.

Products Images

Immunohistochemical analysis of paraffin-embedded human Squamous cell carcinoma of lung. 1, Antibody was diluted at 1:200(4° overnight). 2, Tris-EDTA,pH9.0 was used for antigen retrieval. 3,Secondary antibody was diluted at 1:200(room temperature, 45min).