

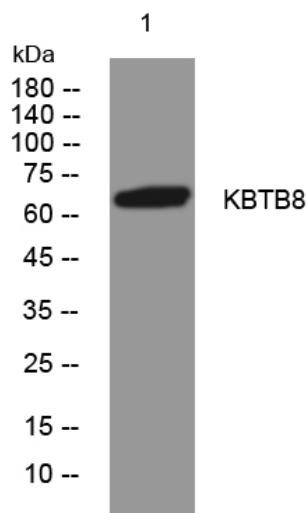


KBTB8 rabbit pAb

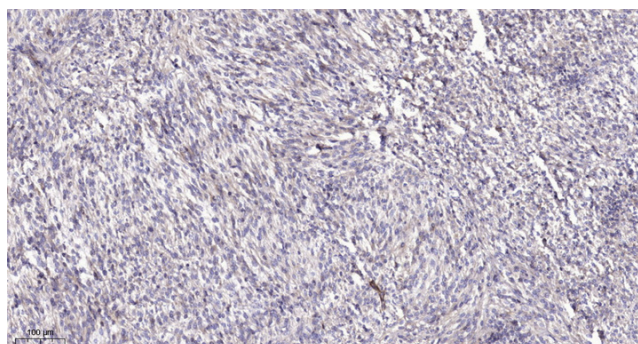
Catalog No	YP-Ab-11207
Isotype	IgG
Reactivity	Human; Mouse; Rat
Applications	WB; ELISA; IHC
Gene Name	KBTBD8 KIAA1842 TAKRP
Protein Name	KBTB8
Immunogen	Synthesized peptide derived from human KBTB8 AA range: 445-495
Specificity	This antibody detects endogenous levels of KBTB8 at Human/Mouse/Rat
Formulation	Liquid in PBS containing 50% glycerol, 0.5% BSA and 0.02% sodium azide.
Source	Polyclonal, Rabbit, IgG
Purification	The antibody was affinity-purified from rabbit serum by affinity-chromatography using specific immunogen.
Dilution	WB 1:500-2000; IHC-p 1:50-300; ELISA 2000-20000
Concentration	1 mg/ml
Purity	≥90%
Storage Stability	-20°C/1 year
Synonyms	
Observed Band	
Cell Pathway	Cytoplasm, cytoskeleton, spindle . Golgi apparatus . Translocates to the spindle apparatus during mitosis. .
Tissue Specificity	
Function	similarity: Contains 1 BACK (BTB/Kelch associated) domain., similarity: Contains 1 BTB (POZ) domain., similarity: Contains 5 Kelch repeats.,
Background	
matters needing attention	Avoid repeated freezing and thawing!
Usage suggestions	This product can be used in immunological reaction related experiments. For more information, please consult technical personnel.



Products Images



Western blot analysis of lysates from MDA-MB cells, primary antibody was diluted at 1:1000, 4° over night



Immunohistochemical analysis of paraffin-embedded human Colon cancer. 1, Antibody was diluted at 1:200(4° overnight). 2, Tris-EDTA, pH9.0 was used for antigen retrieval. 3, Secondary antibody was diluted at 1:200(room temperature, 45min).