



# PTPRQ rabbit pAb

<b>Catalog No</b>	YP-Ab-11182
<b>Isotype</b>	IgG
<b>Reactivity</b>	Human; Mouse; Rat
<b>Applications</b>	WB; IHC
<b>Gene Name</b>	PTPRQ
<b>Protein Name</b>	PTPRQ
<b>Immunogen</b>	Synthesized peptide derived from human PTPRQ AA range: 1729-1779
<b>Specificity</b>	This antibody detects endogenous levels of PTPRQ at Human/Mouse/Rat
<b>Formulation</b>	Liquid in PBS containing 50% glycerol, 0.5% BSA and 0.02% sodium azide.
<b>Source</b>	Polyclonal, Rabbit, IgG
<b>Purification</b>	The antibody was affinity-purified from rabbit serum by affinity-chromatography using specific immunogen.
<b>Dilution</b>	WB 1:500-2000; IHC-p 1:50-300
<b>Concentration</b>	1 mg/ml
<b>Purity</b>	≥90%
<b>Storage Stability</b>	-20°C/1 year
<b>Synonyms</b>	
<b>Observed Band</b>	
<b>Cell Pathway</b>	Membrane ; Single-pass type I membrane protein .
<b>Tissue Specificity</b>	In developing kidney, it localizes to the basal membrane of podocytes, beginning when podocyte progenitors can first be identified in the embryonic kidney (at protein level). Expressed in lung and kidney.
<b>Function</b>	catalytic activity: Protein tyrosine phosphate + H <sub>2</sub> O = protein tyrosine + phosphate.; function: Phosphatidylinositol phosphatase required for auditory function. May act by regulating the level of phosphatidylinositol 4,5-bisphosphate (PIP <sub>2</sub> ) level in the basal region of hair bundles. Can dephosphorylate a broad range of phosphatidylinositol phosphates, including phosphatidylinositol 3,4,5-trisphosphate and most phosphatidylinositol monophosphates and diphosphates. Phosphate can be hydrolyzed from the D3 and D5 positions in the inositol ring. Has low tyrosine-protein phosphatase activity; however, the relevance of such activity in vivo is unclear.; similarity: Belongs to the protein-tyrosine phosphatase family. Receptor class 2A subfamily.; similarity: Contains 1 tyrosine-protein phosphatase domain.; similarity: Contains 18 fibronectin type-III domains.; tissue specificity: In developing kidney, it



## Background

This locus encodes a member of the type III receptor-like protein-tyrosine phosphatase family. The encoded protein catalyzes the dephosphorylation of phosphotyrosine and phosphatidylinositol and plays roles in cellular proliferation and differentiation. Mutations at this locus have been linked to autosomal recessive deafness. [provided by RefSeq, Mar 2014],

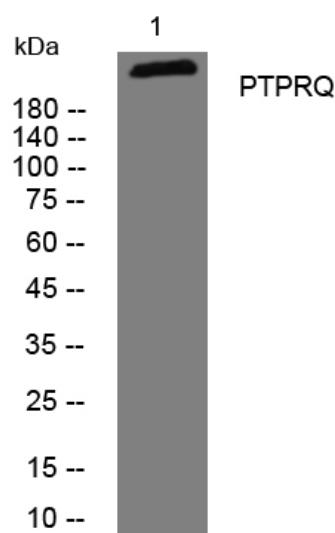
## matters needing attention

Avoid repeated freezing and thawing!

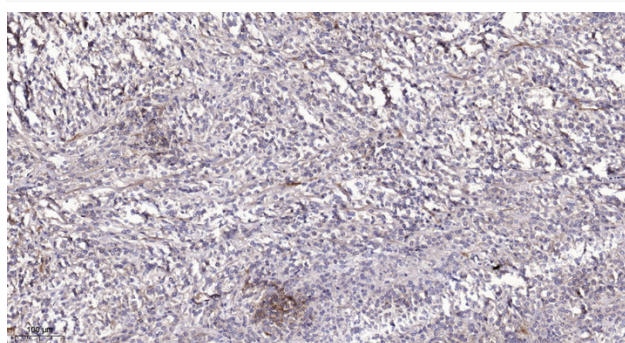
## Usage suggestions

This product can be used in immunological reaction related experiments. For more information, please consult technical personnel.

## Products Images



Western blot analysis of lysates from KB cells, primary antibody was diluted at 1:1000, 4° over night



Immunohistochemical analysis of paraffin-embedded human Colon cancer. 1, Antibody was diluted at 1:200(4° overnight). 2, Tris-EDTA,pH9.0 was used for antigen retrieval. 3,Secondary antibody was diluted at 1:200(room temperature, 45min).