

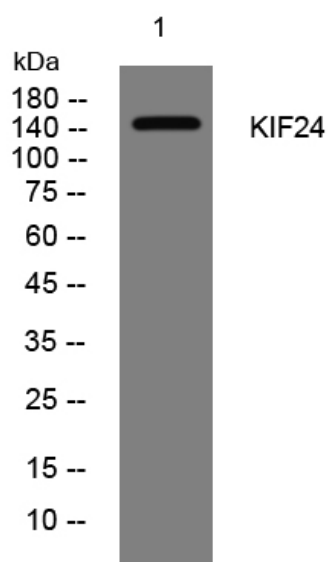


KIF24 rabbit pAb

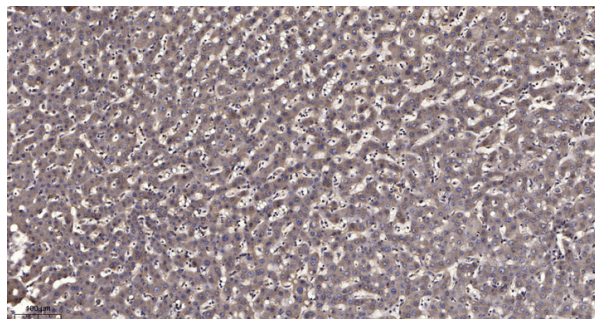
Catalog No	YP-Ab-11181
Isotype	IgG
Reactivity	Human; Mouse
Applications	WB;IHC
Gene Name	KIF24 C9orf48
Protein Name	KIF24
Immunogen	Synthesized peptide derived from human KIF24 AA range: 1-51
Specificity	This antibody detects endogenous levels of KIF24 at Human/Mouse
Formulation	Liquid in PBS containing 50% glycerol, 0.5% BSA and 0.02% sodium azide.
Source	Polyclonal, Rabbit,IgG
Purification	The antibody was affinity-purified from rabbit serum by affinity-chromatography using specific immunogen.
Dilution	WB 1:500-2000;IHC-p 1:50-300
Concentration	1 mg/ml
Purity	≥90%
Storage Stability	-20°C/1 year
Synonyms	
Observed Band	
Cell Pathway	Cytoplasm, cytoskeleton, microtubule organizing center, centrosome, centriole . Cytoplasm, cytoskeleton, microtubule organizing center, centrosome . Primarily localizes to the mother centriole/basal body and is either absent at daughter centriole.
Tissue Specificity	
Function	similarity:Belongs to the kinesin-like protein family.,similarity:Contains 1 kinesin-motor domain.,similarity:Contains 1 SAM (sterile alpha motif) domain.,
Background	Kinesins, such as KIF24, are microtubule-dependent ATPases that function as molecular motors. They play important roles in intracellular vesicle transport and cell division (summary by Venturelli et al., 2010 [PubMed 20670673]).[supplied by OMIM, Feb 2011],
matters needing attention	Avoid repeated freezing and thawing!
Usage suggestions	This product can be used in immunological reaction related experiments. For more information, please consult technical personnel.



Products Images



Western blot analysis of lysates from K562 cells, primary antibody was diluted at 1:1000, 4° over night



Immunohistochemical analysis of paraffin-embedded human liver cancer. 1, Antibody was diluted at 1:200(4° overnight). 2, Tris-EDTA, pH9.0 was used for antigen retrieval. 3, Secondary antibody was diluted at 1:200(room temperature, 45min).