



# GLDN rabbit pAb

<b>Catalog No</b>	YP-Ab-11180
<b>Isotype</b>	IgG
<b>Reactivity</b>	Human; Mouse; Rat
<b>Applications</b>	WB
<b>Gene Name</b>	GLDN COLM UNQ9339/PRO34011
<b>Protein Name</b>	GLDN
<b>Immunogen</b>	Synthesized peptide derived from human GLDN AA range: 461-511
<b>Specificity</b>	This antibody detects endogenous levels of GLDN at Human/Mouse/Rat
<b>Formulation</b>	Liquid in PBS containing 50% glycerol, 0.5% BSA and 0.02% sodium azide.
<b>Source</b>	Polyclonal, Rabbit, IgG
<b>Purification</b>	The antibody was affinity-purified from rabbit serum by affinity-chromatography using specific immunogen.
<b>Dilution</b>	WB 1: 500-2000
<b>Concentration</b>	1 mg/ml
<b>Purity</b>	≥90%
<b>Storage Stability</b>	-20°C/1 year
<b>Synonyms</b>	
<b>Observed Band</b>	
<b>Cell Pathway</b>	Cell membrane ; Single-pass type II membrane protein . Cell projection, axon . Detected at the nodes of Ranvier. Detected at immature heminodes. .; [Gliomedin shedded ectodomain]: Secreted . Secreted, extracellular space, extracellular matrix . Proteolytic processing gives rise to a soluble extracellular domain that is secreted. The gliomedin shedded ectodomain localizes to the nodes of Ranvier. .
<b>Tissue Specificity</b>	Specifically expressed in spinal cord, brain, placenta and sciatic nerve. More abundant in peripheral than central nervous system.
<b>Function</b>	domain: The olfactomedin-like domain mediates NFASC/neurofascin and NRCAM binding., function: Plays a role in the formation of the nodes of Ranvier along myelinated axons. Probable NRCAM and NFASC/neurofascin ligand which may provide a glial positional clue required for the proper molecular assembly of the nodes of Ranvier., similarity: Contains 1 olfactomedin-like domain., similarity: Contains 2 collagen-like domains., subcellular location: Localizes to the nodes of Ranvier., subunit: Interacts with NFASC/neurofascin and NRCAM., tissue specificity: Specifically expressed in spinal cord, brain, placenta and sciatic nerve. More abundant in peripheral than central nervous system.,
<b>Background</b>	

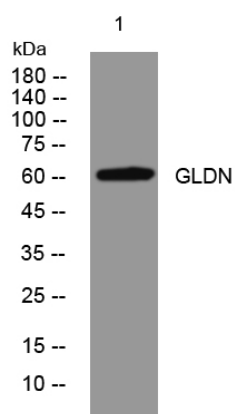
**matters needing attention**

Avoid repeated freezing and thawing!

**Usage suggestions**

This product can be used in immunological reaction related experiments. For more information, please consult technical personnel.

## Products Images



Western blot analysis of lysates from KB cells, primary antibody was diluted at 1:1000, 4°over night