

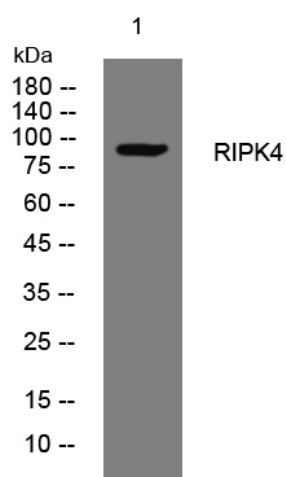


# RIPK4 rabbit pAb

<b>Catalog No</b>	YP-Ab-11165
<b>Isotype</b>	IgG
<b>Reactivity</b>	Human; Mouse
<b>Applications</b>	WB
<b>Gene Name</b>	RIPK4 ANKRD3 DIK
<b>Protein Name</b>	RIPK4
<b>Immunogen</b>	Synthesized peptide derived from human RIPK4 AA range: 280-330
<b>Specificity</b>	This antibody detects endogenous levels of RIPK4 at Human/Mouse
<b>Formulation</b>	Liquid in PBS containing 50% glycerol, 0.5% BSA and 0.02% sodium azide.
<b>Source</b>	Polyclonal, Rabbit,IgG
<b>Purification</b>	The antibody was affinity-purified from rabbit serum by affinity-chromatography using specific immunogen.
<b>Dilution</b>	WB 1: 500-2000
<b>Concentration</b>	1 mg/ml
<b>Purity</b>	≥90%
<b>Storage Stability</b>	-20°C/1 year
<b>Synonyms</b>	
<b>Observed Band</b>	
<b>Cell Pathway</b>	Cytoplasm. Membrane ; Peripheral membrane protein .
<b>Tissue Specificity</b>	Expressed in hair follicles and skin.
<b>Function</b>	catalytic activity:ATP + a protein = ADP + a phosphoprotein.,function:Plays a role in NF-kappa B activation.,PTM:May be phosphorylated by MAP3K2 and MAP3K3.,PTM:Proteolytically cleaved by during Fas-induced apoptosis. Cleavage at Asp-388 and Asp-426.,similarity:Belongs to the protein kinase superfamily.,similarity:Belongs to the protein kinase superfamily. TKL Ser/Thr protein kinase family.,similarity:Contains 1 protein kinase domain.,similarity:Contains 10 ANK repeats.,subunit:Interacts with PRKCB (By similarity). Interacts with TRAF1, TRAF2, TRAF3 and TRAF5.,
<b>Background</b>	The protein encoded by this gene is a serine/threonine protein kinase that interacts with protein kinase C-delta. The encoded protein can also activate NFkappaB and is required for keratinocyte differentiation. This kinase undergoes autophosphorylation. [provided by RefSeq, Jul 2008],
<b>matters needing attention</b>	Avoid repeated freezing and thawing!

**Usage suggestions**

This product can be used in immunological reaction related experiments. For more information, please consult technical personnel.

**Products Images**

Western blot analysis of lysates from HuvEc cells, primary antibody was diluted at 1:1000, 4° over night