



RN112 rabbit pAb

Catalog No	YP-Ab-11164
Isotype	IgG
Reactivity	Human; Mouse; Rat
Applications	WB; IHC
Gene Name	RNF112 BFP ZNF179
Protein Name	RN112
Immunogen	Synthesized peptide derived from human RN112 AA range: 377-427
Specificity	This antibody detects endogenous levels of RN112 at Human/Mouse/Rat
Formulation	Liquid in PBS containing 50% glycerol, 0.5% BSA and 0.02% sodium azide.
Source	Polyclonal, Rabbit, IgG
Purification	The antibody was affinity-purified from rabbit serum by affinity-chromatography using specific immunogen.
Dilution	WB 1:500-2000; IHC-p 1:50-300
Concentration	1 mg/ml
Purity	≥90%
Storage Stability	-20°C/1 year
Synonyms	
Observed Band	
Cell Pathway	Membrane ; Multi-pass membrane protein . Membrane ; Peripheral membrane protein . Cytoplasm . Nucleus . Nucleus, nuclear body . Nucleus, nucleoplasm . Endosome . Cytoplasmic vesicle, secretory vesicle, synaptic vesicle . Cell junction, synapse, postsynaptic density . Perikaryon . Cell projection, neuron projection . Predominantly in the nucleus, but some amounts were also found in the cytoplasm. Oxidative stress stimulates its shuttling from the cytoplasm into the nucleus. Recruited to nuclear bodies via its interaction with ZBTB16. Localizes to the cell soma and neuritis and only slightly to the nucleus in the neurons of most brain areas. .
Tissue Specificity	Predominantly expressed in brain (PubMed:10574464). Decreased expression in glioma brain tumors as compared to normal brains (at protein level) (PubMed:28684796).
Function	similarity: Contains 1 RING-type zinc finger., tissue specificity: Predominantly expressed in brain.,
Background	This gene encodes a member of the RING finger protein family of transcription factors. The protein is primarily expressed in brain. The gene is located within the Smith-Magenis syndrome region on chromosome 17. [provided by RefSeq, Jul 2008],



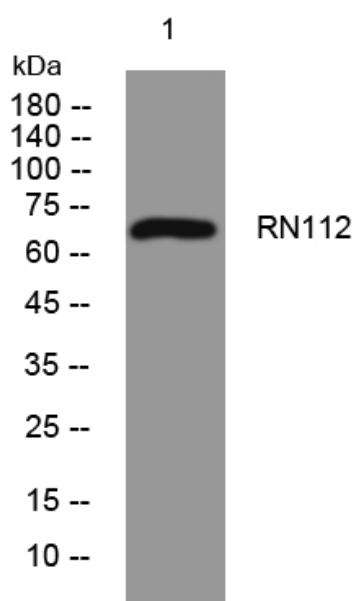
matters needing attention

Avoid repeated freezing and thawing!

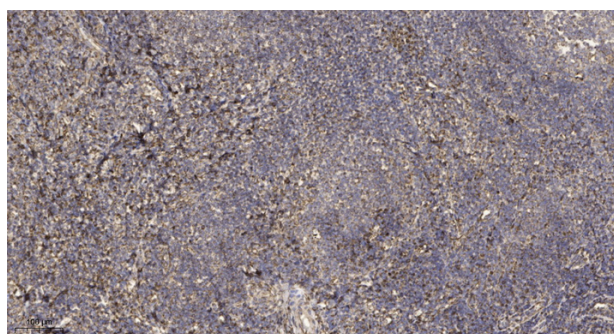
Usage suggestions

This product can be used in immunological reaction related experiments. For more information, please consult technical personnel.

Products Images



Western blot analysis of lysates from K562 cells, primary antibody was diluted at 1:1000, 4° over night



Immunohistochemical analysis of paraffin-embedded human tonsil. 1, Antibody was diluted at 1:200(4° overnight). 2, Tris-EDTA, pH9.0 was used for antigen retrieval. 3, Secondary antibody was diluted at 1:200(room temperature, 45min).