

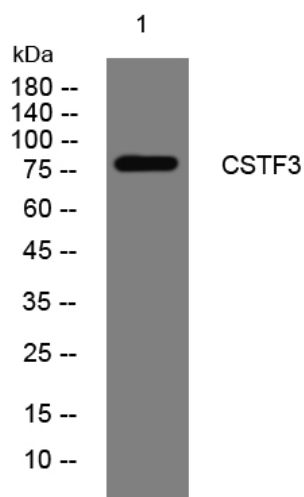


# CSTF3 rabbit pAb

|                                  |   |
|----------------------------------|---|
| <b>Catalog No</b>                | YP-Ab-11162   |
| <b>Isotype</b>                   | IgG   |
| <b>Reactivity</b>                | Human; Mouse  |
| <b>Applications</b>              | WB  |
| <b>Gene Name</b>                 | CSTF3   |
| <b>Protein Name</b>              | CSTF3   |
| <b>Immunogen</b>                 | Synthesized peptide derived from human CSTF3 AA range: 231-281  |
| <b>Specificity</b>               | This antibody detects endogenous levels of CSTF3 at Human/Mouse   |
| <b>Formulation</b>               | Liquid in PBS containing 50% glycerol, 0.5% BSA and 0.02% sodium azide.   |
| <b>Source</b>                    | Polyclonal, Rabbit,IgG  |
| <b>Purification</b>              | The antibody was affinity-purified from rabbit serum by affinity-chromatography using specific immunogen.   |
| <b>Dilution</b>                  | WB 1: 500-2000  |
| <b>Concentration</b>             | 1 mg/ml   |
| <b>Purity</b>                    | ≥90%  |
| <b>Storage Stability</b>         | -20°C/1 year  |
| <b>Synonyms</b>                  |   |
| <b>Observed Band</b>             |   |
| <b>Cell Pathway</b>              | Nucleus.  |
| <b>Tissue Specificity</b>        |   |
| <b>Function</b>                  | function:One of the multiple factors required for polyadenylation and 3'-end cleavage of mammalian pre-mRNAs.,similarity:Contains 9 HAT repeats.,subunit:Homodimer. The CSTF complex is composed of CSTF1 (50 kDa subunit), CSTF2 (64 kDa subunit) and CSTF3 (77 kDa subunit). CSTF3 directly interacts with CSTF1 and CSTF2. Interacts with FIP1L1.,   |
| <b>Background</b>                | The protein encoded by this gene is one of three (including CSTF1 and CSTF2) cleavage stimulation factors that combine to form the cleavage stimulation factor complex (CSTF). This complex is involved in the polyadenylation and 3' end cleavage of pre-mRNAs. The encoded protein functions as a homodimer and interacts directly with both CSTF1 and CSTF2 in the CSTF complex. Alternative splicing results in multiple transcript variants encoding different isoforms. [provided by RefSeq, Jul 2008], |
| <b>matters needing attention</b> | Avoid repeated freezing and thawing!  |

**Usage suggestions**

This product can be used in immunological reaction related experiments. For more information, please consult technical personnel.

**Products Images**

Western blot analysis of lysates from HCT116 cells, primary antibody was diluted at 1:1000, 4°over night