



EXTL2 rabbit pAb

Catalog No	YP-Ab-11139
Isotype	IgG
Reactivity	Human; Mouse
Applications	WB
Gene Name	EXTL2 EXTR2
Protein Name	EXTL2
Immunogen	Synthesized peptide derived from human EXTL2 AA range: 141-191
Specificity	This antibody detects endogenous levels of EXTL2 at Human/Mouse
Formulation	Liquid in PBS containing 50% glycerol, 0.5% BSA and 0.02% sodium azide.
Source	Polyclonal, Rabbit,IgG
Purification	The antibody was affinity-purified from rabbit serum by affinity-chromatography using specific immunogen.
Dilution	WB 1: 500-2000
Concentration	1 mg/ml
Purity	≥90%
Storage Stability	-20°C/1 year
Synonyms	
Observed Band	
Cell Pathway	Endoplasmic reticulum membrane ; Single-pass type II membrane protein .; [Processed exostosin-like 2]: Secreted. A soluble form is found in the serum.
Tissue Specificity	Ubiquitous.
Function	catalytic activity:UDP-N-acetyl-D-glucosamine + beta-D-glucuronosyl-(1->3)-beta-D-galactosyl-(1->3)-beta-D-galactosyl-(1->4)-beta-D-xylosyl-proteoglycan = UDP + alpha-N-acetyl-D-glucosaminyl-(1->4)-beta-D-glucuronosyl-(1->3)-beta-D-galactosyl-(1->3)-beta-D-galactosyl-(1->4)-beta-D-xylosyl-proteoglycan.,function:Glycosyltransferase required for the biosynthesis of heparan-sulfate and responsible for the alternating addition of beta-1-4-linked glucuronic acid (GlcA) and alpha-1-4-linked N-acetylglucosamine (GlcNAc) units to nascent heparan sulfate chains.,online information:Exostosin-like 2,online information:GlycoGene database,pathway:Glycan metabolism; heparan sulfate biosynthesis.,PTM:The soluble form derives from the membrane form by proteolytic processing.,similarity:Belongs to the glycosyltransferase 47 family.,subcellular location:A soluble form is found in the serum.,tissue specificity:Ubiquitous.
Background	

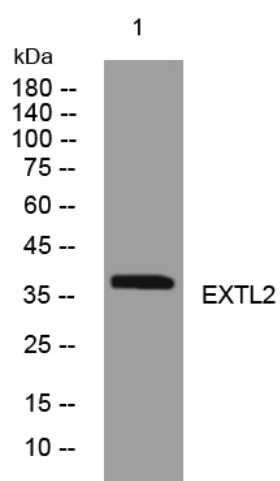
matters needing attention

Avoid repeated freezing and thawing!

Usage suggestions

This product can be used in immunological reaction related experiments. For more information, please consult technical personnel.

Products Images



Western blot analysis of lysates from A431 cells, primary antibody was diluted at 1:1000, 4° over night