



RHBT2 rabbit pAb

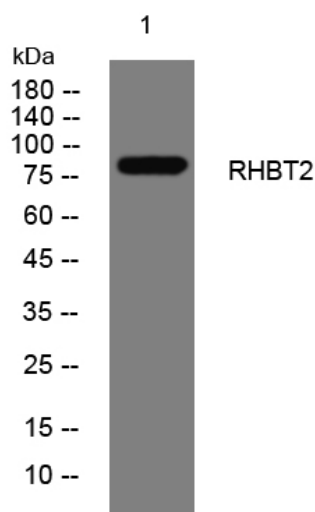
Catalog No	YP-Ab-11125
Isotype	IgG
Reactivity	Human; Mouse
Applications	WB;ELISA;IHC
Gene Name	RHOBTB2 DBC2 KIAA0717
Protein Name	RHBT2
Immunogen	Synthesized peptide derived from human RHBT2 AA range: 573-623
Specificity	This antibody detects endogenous levels of RHBT2 at Human/Mouse
Formulation	Liquid in PBS containing 50% glycerol, 0.5% BSA and 0.02% sodium azide.
Source	Polyclonal, Rabbit,IgG
Purification	The antibody was affinity-purified from rabbit serum by affinity-chromatography using specific immunogen.
Dilution	WB 1:500-2000;IHC-p 1:50-300; ELISA 2000-20000
Concentration	1 mg/ml
Purity	≥90%
Storage Stability	-20°C/1 year
Synonyms	
Observed Band	
Cell Pathway	intracellular,cytosol,plasma membrane,
Tissue Specificity	Ubiquitous, with highest levels in neural tissues. Expression is also detected in fetal lung, heart, and brain.
Function	similarity:Belongs to the small GTPase superfamily. Rho family.,similarity:Contains 2 BTB (POZ) domains.,tissue specificity:Ubiquitous, with highest levels in neural tissues. Expression is also detected in fetal lung, heart, and brain.,
Background	The protein encoded by this gene is a small Rho GTPase and a candidate tumor suppressor. The encoded protein interacts with the cullin-3 protein, a ubiquitin E3 ligase necessary for mitotic cell division. This protein inhibits the growth and spread of some types of breast cancer. Three transcript variants encoding different isoforms have been found for this gene. [provided by RefSeq, Nov 2011],
matters needing attention	Avoid repeated freezing and thawing!



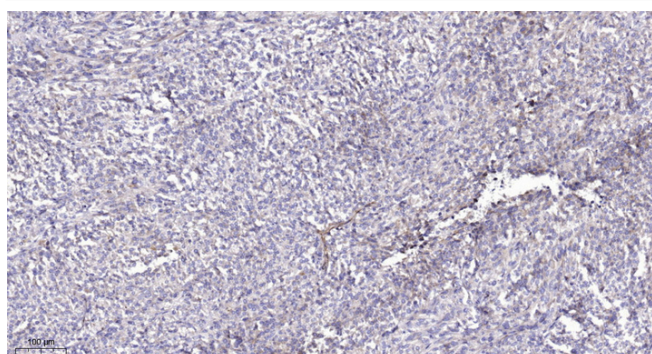
Usage suggestions

This product can be used in immunological reaction related experiments. For more information, please consult technical personnel.

Products Images



Western blot analysis of lysates from DU145 cells, primary antibody was diluted at 1:1000, 4° over night



Immunohistochemical analysis of paraffin-embedded human Colon cancer. 1, Antibody was diluted at 1:200(4° overnight). 2, Tris-EDTA, pH9.0 was used for antigen retrieval. 3, Secondary antibody was diluted at 1:200(room temperature, 45min).