



TALDO rabbit pAb

Catalog No	YP-Ab-11124
Isotype	IgG
Reactivity	Human; Mouse; Rat
Applications	WB
Gene Name	TALDO1 TAL TALDO TALDOR
Protein Name	TALDO
Immunogen	Synthesized peptide derived from human TALDO AA range: 21-71
Specificity	This antibody detects endogenous levels of TALDO at Human/Mouse/Rat
Formulation	Liquid in PBS containing 50% glycerol, 0.5% BSA and 0.02% sodium azide.
Source	Polyclonal, Rabbit, IgG
Purification	The antibody was affinity-purified from rabbit serum by affinity-chromatography using specific immunogen.
Dilution	WB 1: 500-2000
Concentration	1 mg/ml
Purity	≥90%
Storage Stability	-20°C/1 year
Synonyms	
Observed Band	
Cell Pathway	Cytoplasm .
Tissue Specificity	
Function	catalytic activity: Sedoheptulose 7-phosphate + D-glyceraldehyde 3-phosphate = D-erythrose 4-phosphate + D-fructose 6-phosphate., disease: Defects in TALDO1 are the cause of transaldolase 1 deficiency (TALDO1 deficiency) [MIM:606003]. It results in telangiectases of the skin, hepatosplenomegaly, and enlarged clitoris., function: Transaldolase is important for the balance of metabolites in the pentose-phosphate pathway., pathway: Carbohydrate degradation; pentose phosphate pathway; D-glyceraldehyde 3-phosphate and beta-D-fructose 6-phosphate from D-ribose 5-phosphate and D-xylulose 5-phosphate (non-oxidative stage): step 2/3., similarity: Belongs to the transaldolase family., similarity: Belongs to the transaldolase family. Type 1 subfamily.,
Background	Transaldolase 1 is a key enzyme of the nonoxidative pentose phosphate pathway providing ribose-5-phosphate for nucleic acid synthesis and NADPH for lipid biosynthesis. This pathway can also maintain glutathione at a reduced state and thus protect sulfhydryl groups and cellular integrity from oxygen radicals. The functional gene of transaldolase 1 is located on chromosome 11 and a



pseudogene is identified on chromosome 1 but there are conflicting map locations. The second and third exon of this gene were developed by insertion of a retrotransposable element. This gene is thought to be involved in multiple sclerosis. [provided by RefSeq, Jul 2008],

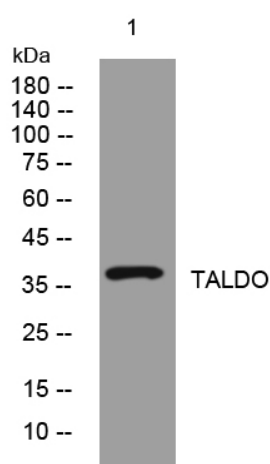
matters needing attention

Avoid repeated freezing and thawing!

Usage suggestions

This product can be used in immunological reaction related experiments. For more information, please consult technical personnel.

Products Images



Western blot analysis of lysates from MCF-7 cells, primary antibody was diluted at 1:1000, 4° over night