

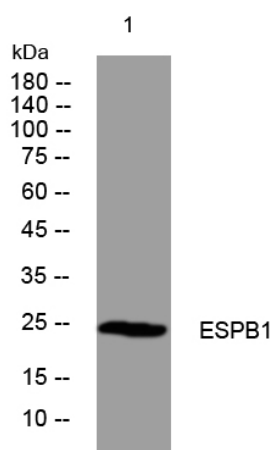


# ESPB1 rabbit pAb

<b>Catalog No</b>	YP-Ab-11121
<b>Isotype</b>	IgG
<b>Reactivity</b>	Human;Rat;Mouse;
<b>Applications</b>	WB
<b>Gene Name</b>	ELSPBP1 E12
<b>Protein Name</b>	ESPB1
<b>Immunogen</b>	Synthesized peptide derived from human ESPB1 AA range: 67-117
<b>Specificity</b>	This antibody detects endogenous levels of ESPB1 at Human
<b>Formulation</b>	Liquid in PBS containing 50% glycerol, 0.5% BSA and 0.02% sodium azide.
<b>Source</b>	Polyclonal, Rabbit,IgG
<b>Purification</b>	The antibody was affinity-purified from rabbit serum by affinity-chromatography using specific immunogen.
<b>Dilution</b>	WB 1: 500-2000
<b>Concentration</b>	1 mg/ml
<b>Purity</b>	≥90%
<b>Storage Stability</b>	-20°C/1 year
<b>Synonyms</b>	
<b>Observed Band</b>	
<b>Cell Pathway</b>	Secreted .
<b>Tissue Specificity</b>	Detected in cauda epididymidal fluid and on sperm membrane (at protein level).
<b>Function</b>	function: Binds to spermatozoa upon ejaculation and may play a role in sperm capacitation. Has phosphorylcholine-binding activity.,PTM: N-glycosylated.,similarity: Belongs to the seminal plasma protein family.,similarity: Contains 4 fibronectin type-II domains.,tissue specificity: Detected in cauda epididymidal fluid and on sperm membrane (at protein level).,
<b>Background</b>	The protein encoded by this gene belongs to the sperm-coating protein family of epididymal origin. This protein and its canine homolog are the first known examples of proteins with four tandemly arranged fibronectin type 2 (Fn2) domains in the Fn2-module protein family. [provided by RefSeq, Jul 2008],
<b>matters needing attention</b>	Avoid repeated freezing and thawing!

**Usage suggestions**

This product can be used in immunological reaction related experiments. For more information, please consult technical personnel.

**Products Images**

Western blot analysis of lysates from MCF-7 cells,  
primary antibody was diluted at 1:1000, 4° over night