

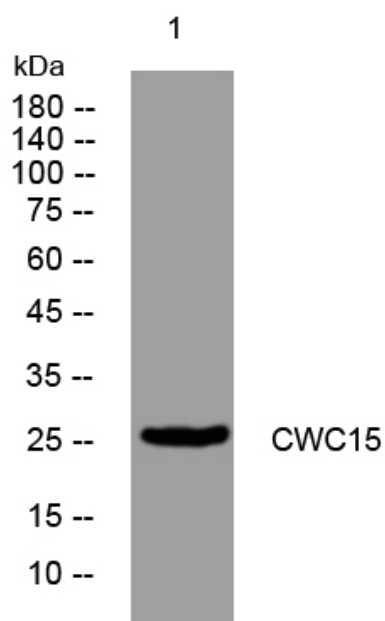


CWC15 rabbit pAb

Catalog No	YP-Ab-11120
Isotype	IgG
Reactivity	Human; Mouse; Rat
Applications	WB
Gene Name	CWC15 C11orf5 AD-002 HSPC148
Protein Name	CWC15
Immunogen	Synthesized peptide derived from human CWC15 AA range: 33-83
Specificity	This antibody detects endogenous levels of CWC15 at Human/Mouse/Rat
Formulation	Liquid in PBS containing 50% glycerol, 0.5% BSA and 0.02% sodium azide.
Source	Polyclonal, Rabbit, IgG
Purification	The antibody was affinity-purified from rabbit serum by affinity-chromatography using specific immunogen.
Dilution	WB 1: 500-2000
Concentration	1 mg/ml
Purity	≥90%
Storage Stability	-20°C/1 year
Synonyms	
Observed Band	
Cell Pathway	Nucleus .
Tissue Specificity	
Function	caution: Has been termed C11orf5 (PubMed:10873569), but is not the official C11orf5 as defined by HGNC., function: Involved in pre-mRNA splicing., similarity: Belongs to the CWC15 family.,
Background	
matters needing attention	Avoid repeated freezing and thawing!
Usage suggestions	This product can be used in immunological reaction related experiments. For more information, please consult technical personnel.



Products Images



Western blot analysis of lysates from PC-12 cells,
primary antibody was diluted at 1:1000, 4° over night