

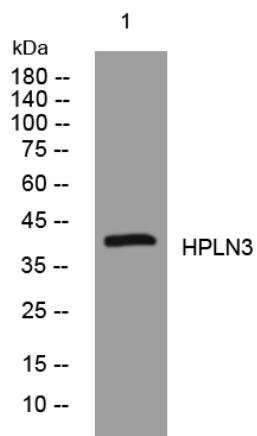


HPLN3 rabbit pAb

| | |
|----------------------------------|---|
| Catalog No | YP-Ab-11104 |
| Isotype | IgG |
| Reactivity | Human; Mouse |
| Applications | WB |
| Gene Name | HAPLN3 EXLD1 UNQ238/PRO271 |
| Protein Name | HPLN3 |
| Immunogen | Synthesized peptide derived from human HPLN3 AA range: 87-137 |
| Specificity | This antibody detects endogenous levels of HPLN3 at Human/Mouse |
| Formulation | Liquid in PBS containing 50% glycerol, 0.5% BSA and 0.02% sodium azide. |
| Source | Polyclonal, Rabbit,IgG |
| Purification | The antibody was affinity-purified from rabbit serum by affinity-chromatography using specific immunogen. |
| Dilution | WB 1: 500-2000 |
| Concentration | 1 mg/ml |
| Purity | ≥90% |
| Storage Stability | -20°C/1 year |
| Synonyms | |
| Observed Band | |
| Cell Pathway | Secreted, extracellular space, extracellular matrix . |
| Tissue Specificity | Widely expressed with highest levels in spleen and placenta. |
| Function | function:May function in hyaluronic acid binding.,similarity:Belongs to the HAPLN family.,similarity:Contains 1 Ig-like V-type (immunoglobulin-like) domain.,similarity:Contains 2 Link domains.,tissue specificity:Widely expressed with highest levels in spleen and placenta., |
| Background | This gene belongs to the hyaluronan and proteoglycan binding link protein gene family. The protein encoded by this gene may function in hyaluronic acid binding and cell adhesion. [provided by RefSeq, Jul 2008], |
| matters needing attention | Avoid repeated freezing and thawing! |
| Usage suggestions | This product can be used in immunological reaction related experiments. For more information, please consult technical personnel. |



Products Images



Western blot analysis of lysates from 293T cells,
primary antibody was diluted at 1:1000, 4° over night