

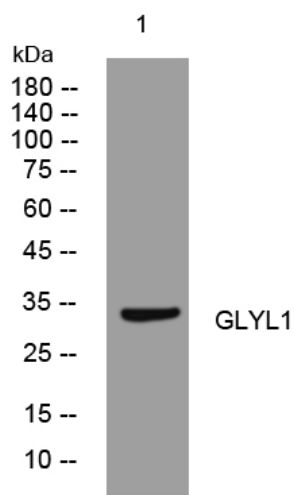


GLYL1 rabbit pAb

| | |
|----------------------------------|--|
| Catalog No | YP-Ab-11095 |
| Isotype | IgG |
| Reactivity | Human;Rat;Mouse; |
| Applications | WB |
| Gene Name | GLYATL1 GNAT |
| Protein Name | GLYL1 |
| Immunogen | Synthesized peptide derived from human GLYL1 AA range: 42-92 |
| Specificity | This antibody detects endogenous levels of GLYL1 at Human |
| Formulation | Liquid in PBS containing 50% glycerol, 0.5% BSA and 0.02% sodium azide. |
| Source | Polyclonal, Rabbit,IgG |
| Purification | The antibody was affinity-purified from rabbit serum by affinity-chromatography using specific immunogen. |
| Dilution | WB 1: 500-2000 |
| Concentration | 1 mg/ml |
| Purity | ≥90% |
| Storage Stability | -20°C/1 year |
| Synonyms | |
| Observed Band | |
| Cell Pathway | mitochondrion, |
| Tissue Specificity | Expressed in liver and kidney and, at lower levels, in pancreas, testis, ovary and stomach. |
| Function | catalytic activity:Acyl-CoA + glycine = CoA + N-acylglycine.,function:Mitochondrial acyltransferase which transfers the acyl group to the N-terminus of glycine. Can conjugate a multitude of substrates to form a variety of N-acylglycines.,similarity:Belongs to the glycine N-acyltransferase family., |
| Background | |
| matters needing attention | Avoid repeated freezing and thawing! |
| Usage suggestions | This product can be used in immunological reaction related experiments. For more information, please consult technical personnel. |



Products Images



Western blot analysis of lysates from Hela cells,
primary antibody was diluted at 1:1000, 4° over night