

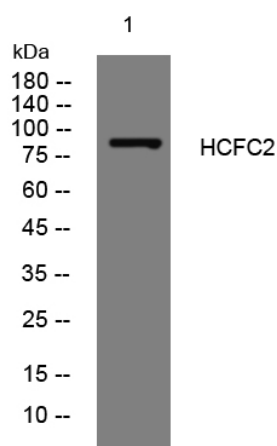


HCFC2 rabbit pAb

| | |
|----------------------------------|--|
| Catalog No | YP-Ab-11090 |
| Isotype | IgG |
| Reactivity | Human; Mouse; Rat |
| Applications | WB |
| Gene Name | HCFC2 |
| Protein Name | HCFC2 |
| Immunogen | Synthesized peptide derived from human HCFC2 AA range: 347-397 |
| Specificity | This antibody detects endogenous levels of HCFC2 at Human/Mouse/Rat |
| Formulation | Liquid in PBS containing 50% glycerol, 0.5% BSA and 0.02% sodium azide. |
| Source | Polyclonal, Rabbit, IgG |
| Purification | The antibody was affinity-purified from rabbit serum by affinity-chromatography using specific immunogen. |
| Dilution | WB 1: 500-2000 |
| Concentration | 1 mg/ml |
| Purity | ≥90% |
| Storage Stability | -20°C/1 year |
| Synonyms | |
| Observed Band | |
| Cell Pathway | Cytoplasm . Nucleus . |
| Tissue Specificity | Highly expressed in testis. Detected at lower levels in spleen, thymus, prostate, ovary, small intestine and colon. |
| Function | similarity: Contains 3 fibronectin type-III domains., similarity: Contains 4 Kelch repeats., subunit: Binds MLL. Component of the MLL complex, at least composed of MLL, ASH2L, RBBP5, DPY30, WDR5, MEN1, HCFC1 and HCFC2., tissue specificity: Highly expressed in testis. Detected at lower levels in spleen, thymus, prostate, ovary, small intestine and colon., |
| Background | This gene encodes one of two proteins which interact with VP16, a herpes simplex virus protein that initiates virus infection. Both the encoded protein and the original Herpes host cell factor interact with VP16 through a beta-propeller domain. The original Herpes host cell factor, however, is effective at initiating viral infection while the encoded protein is not. Transcripts of varying length due to alternative polyadenylation signals have been described. [provided by RefSeq, Jul 2008], |
| matters needing attention | Avoid repeated freezing and thawing! |

Usage suggestions

This product can be used in immunological reaction related experiments. For more information, please consult technical personnel.

Products Images

Western blot analysis of lysates from K562 cells,
primary antibody was diluted at 1:1000, 4° over night