

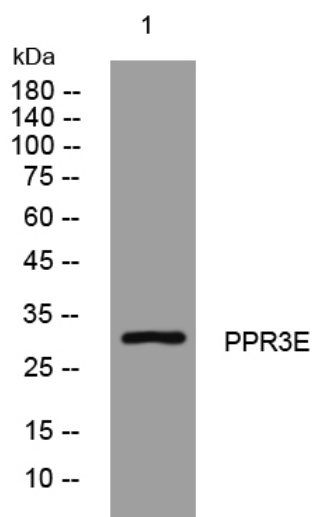


# PPR3E rabbit pAb

<b>Catalog No</b>	YP-Ab-11074
<b>Isotype</b>	IgG
<b>Reactivity</b>	Human; Mouse; Rat
<b>Applications</b>	WB
<b>Gene Name</b>	PPP1R3E
<b>Protein Name</b>	PPR3E
<b>Immunogen</b>	Synthesized peptide derived from human PPR3E AA range: 210-260
<b>Specificity</b>	This antibody detects endogenous levels of PPR3E at Human/Mouse/Rat
<b>Formulation</b>	Liquid in PBS containing 50% glycerol, 0.5% BSA and 0.02% sodium azide.
<b>Source</b>	Polyclonal, Rabbit, IgG
<b>Purification</b>	The antibody was affinity-purified from rabbit serum by affinity-chromatography using specific immunogen.
<b>Dilution</b>	WB 1: 500-2000
<b>Concentration</b>	1 mg/ml
<b>Purity</b>	≥90%
<b>Storage Stability</b>	-20°C/1 year
<b>Synonyms</b>	
<b>Observed Band</b>	
<b>Cell Pathway</b>	
<b>Tissue Specificity</b>	Expressed in skeletal muscle and heart with barely detectable levels in liver.
<b>Function</b>	domain: The CBM21 domain is known to be involved in the localization to glycogen and is characteristic of some regulatory subunit of phosphatase complexes., function: Acts as a glycogen-targeting subunit for PP1. PP1 is involved in glycogen metabolism and contributes to the activation of glycogen synthase leading to an increase in glycogen synthesis., similarity: Contains 1 CBM21 (carbohydrate binding type-21) domain., tissue specificity: Expressed in skeletal muscle and heart with barely detectable levels in liver.,
<b>Background</b>	
<b>matters needing attention</b>	Avoid repeated freezing and thawing!

**Usage suggestions**

This product can be used in immunological reaction related experiments. For more information, please consult technical personnel.

**Products Images**

Western blot analysis of lysates from 293T cells,  
primary antibody was diluted at 1:1000, 4° over night