

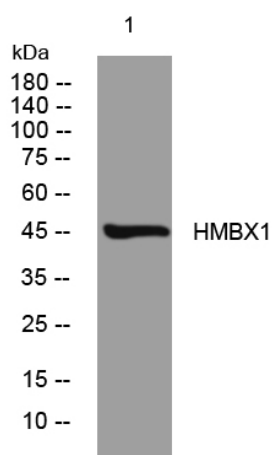


HMBX1 rabbit pAb

Catalog No	YP-Ab-11071
Isotype	IgG
Reactivity	Human; Mouse
Applications	WB
Gene Name	HMBOX1
Protein Name	HMBX1
Immunogen	Synthesized peptide derived from human HMBX1 AA range: 169-219
Specificity	This antibody detects endogenous levels of HMBX1 at Human/Mouse
Formulation	Liquid in PBS containing 50% glycerol, 0.5% BSA and 0.02% sodium azide.
Source	Polyclonal, Rabbit,IgG
Purification	The antibody was affinity-purified from rabbit serum by affinity-chromatography using specific immunogen.
Dilution	WB 1: 500-2000
Concentration	1 mg/ml
Purity	≥90%
Storage Stability	-20°C/1 year
Synonyms	
Observed Band	
Cell Pathway	Nucleus . Cytoplasm . Chromosome, telomere . Nucleus, Cajal body . Nucleus, PML body . Predominantly detected in cytoplasm (PubMed:16825764, PubMed:19728927). Localizes in a dynamic manner to actively processed telomeres (PubMed:23685356). Localizes to the periphery of Cajal bodies (PubMed:23685356). Associates with PML nuclear bodies in telomerase-negative cells (PubMed:23813958). .; [Isoform 5]: Nucleus . Cytoplasm .
Tissue Specificity	Ubiquitous. Detected in pancreas, brain, spleen, placenta, prostate, thymus, liver, heart, bone marrow, skeletal muscle, stomach, uterus, testis, kidney, ovary, colon, lung, cardiac muscle and thyroid gland.
Function	function:Putative transcription factor .,similarity:Contains 1 homeobox DNA-binding domain.,
Background	
matters needing attention	Avoid repeated freezing and thawing!

Usage suggestions

This product can be used in immunological reaction related experiments. For more information, please consult technical personnel.

Products Images

Western blot analysis of lysates from HpeG2 cells, primary antibody was diluted at 1:1000, 4° over night