



SO1C1 rabbit pAb

| | |
|---------------------------|---|
| Catalog No | YP-Ab-11069 |
| Isotype | IgG |
| Reactivity | Human; Mouse; Rat |
| Applications | WB; ELISA; IHC |
| Gene Name | SLCO1C1 OATP14 OATP1C1 OATPF SLC21A14 |
| Protein Name | SO1C1 |
| Immunogen | Synthesized peptide derived from human SO1C1 AA range: 634-684 |
| Specificity | This antibody detects endogenous levels of SO1C1 at Human/Mouse/Rat |
| Formulation | Liquid in PBS containing 50% glycerol, 0.5% BSA and 0.02% sodium azide. |
| Source | Polyclonal, Rabbit, IgG |
| Purification | The antibody was affinity-purified from rabbit serum by affinity-chromatography using specific immunogen. |
| Dilution | WB 1:500-2000; IHC-p 1:50-300; ELISA 2000-20000 |
| Concentration | 1 mg/ml |
| Purity | ≥90% |
| Storage Stability | -20°C/1 year |
| Synonyms | |
| Observed Band | |
| Cell Pathway | Cell membrane ; Multi-pass membrane protein . Expressed in both luminal and abluminal membranes of brain capillary endothelial cells. Localized to the apical membrane and basal surfaces of choroid plexus (By similarity). |
| Tissue Specificity | Highly expressed in brain and in Leydig cells in testis. Detected in many brain regions with the exception of pons and cerebellum. Not strongly enriched in cerebral microvessels. |
| Function | function: Mediates the Na(+)-independent high affinity transport of organic anions such as the thyroid hormones thyroxine (T4) and rT3. Other potential substrates, such as triiodothyronine (T3), 17-beta-glucuronosyl estradiol, estrone-3-sulfate and sulfobromophthalein (BSP) are transported with much lower efficiency. , similarity: Belongs to the organo anion transporter (TC 2.A.60) family. , tissue specificity: Highly expressed in brain and in Leydig cells in testis. Detected in many brain regions with the exception of pons and cerebellum. , |
| Background | This gene encodes a member of the organic anion transporter family. The encoded protein is a transmembrane receptor that mediates the sodium-independent uptake of thyroid hormones in brain tissues. This protein has particularly high affinity for the thyroid hormones thyroxine, tri-iodothyronine and reverse tri-iodothyronine. Polymorphisms in the gene encoding this protein may be associated with fatigue and depression in patients suffering from |



hyperthyroidism. Alternative splicing results in multiple transcript variants.
[provided by RefSeq, Mar 2009],

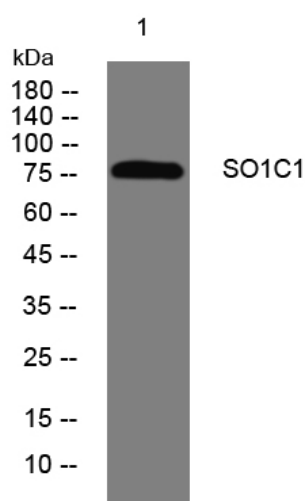
matters needing attention

Avoid repeated freezing and thawing!

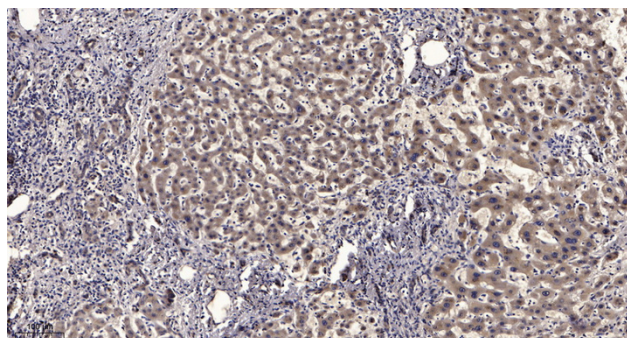
Usage suggestions

This product can be used in immunological reaction related experiments. For more information, please consult technical personnel.

Products Images



Western blot analysis of lysates from HpeG2 cells, primary antibody was diluted at 1:1000, 4° over night



Immunohistochemical analysis of paraffin-embedded human liver cancer. 1, Antibody was diluted at 1:200(4° overnight). 2, Tris-EDTA, pH9.0 was used for antigen retrieval. 3, Secondary antibody was diluted at 1:200(room temperature, 45min).