



STX8 rabbit pAb

Catalog No	YP-Ab-11064
Isotype	IgG
Reactivity	Human; Mouse; Rat
Applications	WB; ELISA; IHC
Gene Name	STX8
Protein Name	STX8
Immunogen	Synthesized peptide derived from human STX8 AA range: 42-92
Specificity	This antibody detects endogenous levels of STX8 at Human/Mouse/Rat
Formulation	Liquid in PBS containing 50% glycerol, 0.5% BSA and 0.02% sodium azide.
Source	Polyclonal, Rabbit, IgG
Purification	The antibody was affinity-purified from rabbit serum by affinity-chromatography using specific immunogen.
Dilution	WB 1:500-2000; IHC-p 1:50-300; ELISA 2000-20000
Concentration	1 mg/ml
Purity	≥90%
Storage Stability	-20°C/1 year
Synonyms	
Observed Band	
Cell Pathway	Membrane ; Single-pass type IV membrane protein . Preferentially associated with the early endosome. To a lesser extent, also present in late endosome, the plasma membrane and coated pits (By similarity).
Tissue Specificity	Highly expressed in heart. Also found in brain, kidney, liver, lung, placenta, skeletal muscle, spleen and pancreas.
Function	function: Vesicle trafficking protein that functions in the early secretory pathway, possibly by mediating retrograde transport from cis-Golgi membranes to the ER.; similarity: Belongs to the syntaxin family.; similarity: Contains 1 t-SNARE coiled-coil homology domain.; subcellular location: Preferentially associated with the early endosome. To lesser extends, also present in late endosome, the plasma membrane and coated pits.; subunit: Forms a SNARE complex with STX7, VTI1B and VAMP8 which functions in the homotypic fusion of late endosomes. Part of the SNARE core complex containing STX7, VAMP8 and VTI1B. Interacts with VAMP8.; tissue specificity: Highly expressed in heart. Also found in brain, kidney, liver, lung, placenta, skeletal muscle, spleen and pancreas.;
Background	The gene is a member of the syntaxin family. The encoded protein is involved in protein trafficking from early to late endosomes via vesicle fusion and exocytosis. A related pseudogene has been identified on chromosome 12. Alternative splicing results in multiple transcript variants. [provided by RefSeq, May 2010],

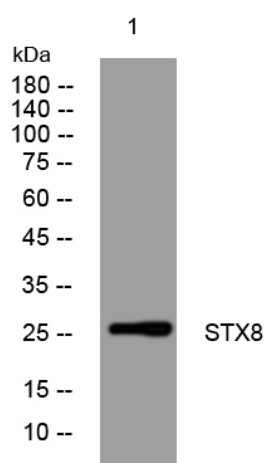
matters needing attention

Avoid repeated freezing and thawing!

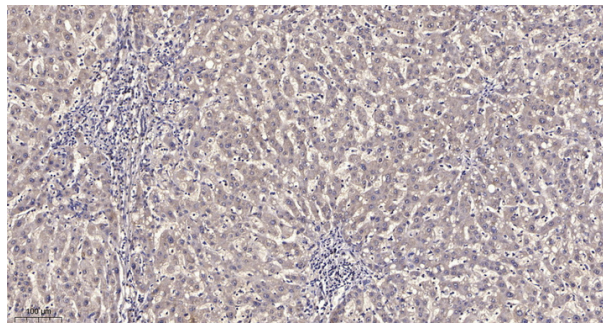
Usage suggestions

This product can be used in immunological reaction related experiments. For more information, please consult technical personnel.

Products Images



Western blot analysis of lysates from HpeG2 cells, primary antibody was diluted at 1:1000, 4° over night



Immunohistochemical analysis of paraffin-embedded human liver cancer. 1, Antibody was diluted at 1:200 (4° overnight). 2, Tris-EDTA, pH 9.0 was used for antigen retrieval. 3, Secondary antibody was diluted at 1:200 (room temperature, 45 min).