



K1731 rabbit pAb

Catalog No	YP-Ab-11060
Isotype	IgG
Reactivity	Human; Mouse; Rat
Applications	IHC; IF
Gene Name	KIAA1731
Protein Name	K1731
Immunogen	Synthesized peptide derived from human K1731 AA range: 208-258
Specificity	This antibody detects endogenous levels of K1731 at Human/Mouse/Rat
Formulation	Liquid in PBS containing 50% glycerol, 0.5% BSA and 0.02% sodium azide.
Source	Polyclonal, Rabbit, IgG
Purification	The antibody was affinity-purified from rabbit serum by affinity-chromatography using specific immunogen.
Dilution	IHC-p 1: 50-200. IF 1:50-200
Concentration	1 mg/ml
Purity	≥90%
Storage Stability	-20°C/1 year
Synonyms	
Observed Band	
Cell Pathway	Cytoplasm, cytoskeleton, microtubule organizing center, centrosome, centriole . Cytoplasm, cytoskeleton, microtubule organizing center, centrosome . Cytoplasm, cytoskeleton, spindle . Cytoplasm, cytoskeleton . Associates with both of the converted centrioles during G1 but becomes more enriched at the newly formed daughter (or unconverted) centrioles during S, G2, and early M phases (PubMed:25131205, PubMed:32060285). In early S phase, localized at the procentriolar microtubule wall and enriched at the proximal ends of the centrioles in CENPJ- and CEP135-dependent manner (PubMed:27185865). Colocalizes with SASS6 and CEP250 proteins (PubMed:25131205). Colocalizes with CEP135 and CEP192 at the centrosomes (PubMed:27185865). Associates with interphase microtubules and mitotic spindles (PubMed:27185865).
Tissue Specificity	
Function	sequence caution: Translation N-terminally shortened., similarity: Contains 7 LRR (leucine-rich) repeats.,
Background	

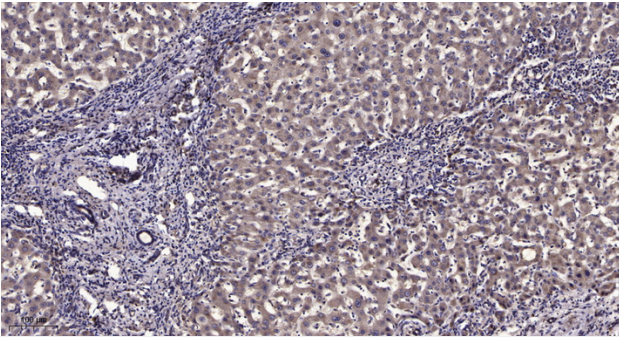
matters needing attention

Avoid repeated freezing and thawing!

Usage suggestions

This product can be used in immunological reaction related experiments. For more information, please consult technical personnel.

Products Images



Immunohistochemical analysis of paraffin-embedded human liver cancer. 1, Antibody was diluted at 1:200(4° overnight). 2, Tris-EDTA,pH9.0 was used for antigen retrieval. 3,Secondary antibody was diluted at 1:200(room temperature, 45min).