

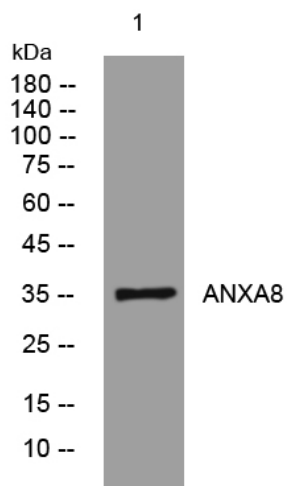


ANXA8 rabbit pAb

Catalog No	YP-Ab-11027
Isotype	IgG
Reactivity	Human; Mouse; Rat
Applications	WB
Gene Name	ANXA8 ANX8
Protein Name	ANXA8
Immunogen	Synthesized peptide derived from human ANXA8 AA range: 244-294
Specificity	This antibody detects endogenous levels of ANXA8 at Human/Mouse/Rat
Formulation	Liquid in PBS containing 50% glycerol, 0.5% BSA and 0.02% sodium azide.
Source	Polyclonal, Rabbit, IgG
Purification	The antibody was affinity-purified from rabbit serum by affinity-chromatography using specific immunogen.
Dilution	WB 1: 500-2000
Concentration	1 mg/ml
Purity	≥90%
Storage Stability	-20°C/1 year
Synonyms	
Observed Band	
Cell Pathway	cytosol, plasma membrane, late endosome membrane,
Tissue Specificity	
Function	domain: A pair of annexin repeats may form one binding site for calcium and phospholipid. function: This protein is an anticoagulant protein that acts as an indirect inhibitor of the thromboplastin-specific complex, which is involved in the blood coagulation cascade. similarity: Belongs to the annexin family. similarity: Contains 4 annexin repeats.
Background	This gene encodes a member of the annexin family of evolutionarily conserved Ca ²⁺ and phospholipid binding proteins. The encoded protein may function as an anticoagulant that indirectly inhibits the thromboplastin-specific complex. Overexpression of this gene has been associated with acute myelocytic leukemia. A highly similar duplicated copy of this gene is found in close proximity on the long arm of chromosome 10. [provided by RefSeq, Jul 2008],
matters needing attention	Avoid repeated freezing and thawing!

**Usage suggestions**

This product can be used in immunological reaction related experiments. For more information, please consult technical personnel.

Products Images

Western blot analysis of lysates from K562 cells,
primary antibody was diluted at 1:1000, 4° over night