



HDA11 rabbit pAb

Catalog No	YP-Ab-11022
Isotype	IgG
Reactivity	Human; Mouse
Applications	WB
Gene Name	HDAC11
Protein Name	HDA11
Immunogen	Synthesized peptide derived from human HDA11 AA range: 170-220
Specificity	This antibody detects endogenous levels of HDA11 at Human/Mouse
Formulation	Liquid in PBS containing 50% glycerol, 0.5% BSA and 0.02% sodium azide.
Source	Polyclonal, Rabbit,IgG
Purification	The antibody was affinity-purified from rabbit serum by affinity-chromatography using specific immunogen.
Dilution	WB 1: 500-2000
Concentration	1 mg/ml
Purity	≥90%
Storage Stability	-20°C/1 year
Synonyms	
Observed Band	
Cell Pathway	Nucleus .
Tissue Specificity	Weakly expressed in most tissues. Strongly expressed in brain, heart, skeletal muscle, kidney and testis.
Function	<p>catalytic activity:Hydrolysis of an N(6)-acetyl-lysine residue of a histone to yield a deacetylated histone.,function:Responsible for the deacetylation of lysine residues on the N-terminal part of the core histones (H2A, H2B, H3 and H4). Histone deacetylation gives a tag for epigenetic repression and plays an important role in transcriptional regulation, cell cycle progression and developmental events. Histone deacetylases act via the formation of large multiprotein complexes.,miscellaneous:Its activity is inhibited by trapoxin, a known histone deacetylase inhibitor.,sequence caution:Translated as Gln.,similarity:Belongs to the histone deacetylase family.,subcellular location:Predominantly nuclear.,subunit:Interacts with HDAC6.,tissue specificity:Weakly expressed in most tissues. Strongly expressed in brain, heart, skeletal muscle, kidney and testis.,</p>
Background	This gene encodes a class IV histone deacetylase. The encoded protein is localized to the nucleus and may be involved in regulating the expression of interleukin 10. Alternative splicing results in multiple transcript variants.[provided



by RefSeq, Apr 2009],

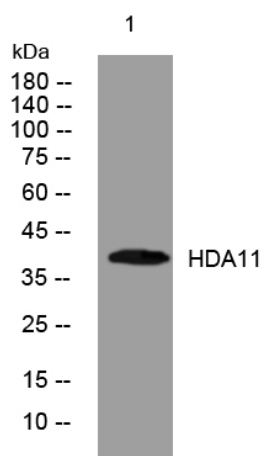
matters needing attention

Avoid repeated freezing and thawing!

Usage suggestions

This product can be used in immunological reaction related experiments. For more information, please consult technical personnel.

Products Images



Western blot analysis of lysates from HuvEc cells,
primary antibody was diluted at 1:1000, 4° over night