



FUT1 rabbit pAb

Catalog No	YP-Ab-10995
Isotype	IgG
Reactivity	Human; Mouse; Rat
Applications	WB
Gene Name	FUT1 H HSC
Protein Name	FUT1
Immunogen	Synthesized peptide derived from human FUT1 AA range: 150-200
Specificity	This antibody detects endogenous levels of FUT1 at Human/Mouse/Rat
Formulation	Liquid in PBS containing 50% glycerol, 0.5% BSA and 0.02% sodium azide.
Source	Polyclonal, Rabbit, IgG
Purification	The antibody was affinity-purified from rabbit serum by affinity-chromatography using specific immunogen.
Dilution	WB 1: 500-2000
Concentration	1 mg/ml
Purity	≥90%
Storage Stability	-20°C/1 year
Synonyms	
Observed Band	
Cell Pathway	Golgi apparatus, Golgi stack membrane ; Single-pass type II membrane protein . Membrane-bound form in trans cisternae of Golgi. .
Tissue Specificity	
Function	catalytic activity:GDP-beta-L-fucose + beta-D-galactosyl-(1->3)-N-acetyl-beta-D-glucosaminyl-(1->3)-beta-D-galactosyl-(1->4)-beta-D-glucosyl-(1<->1)-ceramide = GDP + alpha-L-fucosyl-(1->2)-beta-D-galactosyl-(1->3)-N-acetyl-beta-D-glucosaminyl-(1->3)-beta-D-galactosyl-(1->4)-beta-D-glucosyl-(1<->1)-ceramide.,function:Creates a soluble precursor oligosaccharide FuC-alpha ((1,2)Galbeta-) called the H antigen which is an essential substrate for the final step in the soluble A and B antigen synthesis pathway. H and Se enzymes fucosylate the same acceptor substrates but exhibit different Km values.,miscellaneous:There are two genes (FUT1 and FUT2) which encode galactoside 2-L-fucosyltransferase. They are expressed in a tissue-specific manner with expression restricted to cells of mesodermal or endodermal origin respectively.,online information:Blood group antigen gene mutation database,online
Background	This gene encodes a Golgi stack membrane protein that is involved in the creation of a precursor of the H antigen, which is required for the final step in the synthesis



of soluble A and B antigens. This is one of two genes encoding the galactoside 2-L-fucosyltransferase enzyme. Mutations in this gene are a cause of the H-Bombay blood group. [provided by RefSeq, Aug 2016],

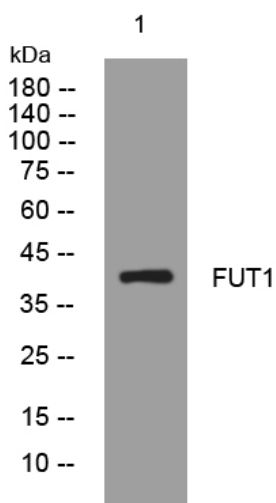
matters needing attention

Avoid repeated freezing and thawing!

Usage suggestions

This product can be used in immunological reaction related experiments. For more information, please consult technical personnel.

Products Images



Western blot analysis of lysates from HCT116 cells, primary antibody was diluted at 1:1000, 4° over night