

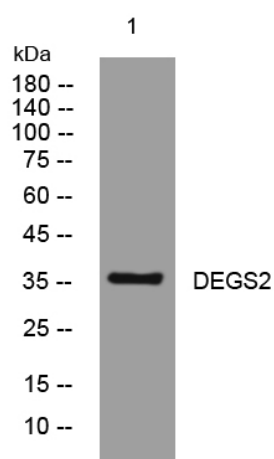


DEGS2 rabbit pAb

Catalog No	YP-Ab-10981
Isotype	IgG
Reactivity	Human; Mouse; Rat
Applications	WB
Gene Name	DEGS2 C14orf66
Protein Name	DEGS2
Immunogen	Synthesized peptide derived from human DEGS2 AA range: 92-142
Specificity	This antibody detects endogenous levels of DEGS2 at Human/Mouse/Rat
Formulation	Liquid in PBS containing 50% glycerol, 0.5% BSA and 0.02% sodium azide.
Source	Polyclonal, Rabbit, IgG
Purification	The antibody was affinity-purified from rabbit serum by affinity-chromatography using specific immunogen.
Dilution	WB 1: 500-2000
Concentration	1 mg/ml
Purity	≥90%
Storage Stability	-20°C/1 year
Synonyms	
Observed Band	
Cell Pathway	Endoplasmic reticulum membrane ; Multi-pass membrane protein .
Tissue Specificity	Highly expressed in skin, intestine and kidney.
Function	function: Bifunctional enzyme which acts as both a sphingolipid delta(4)-desaturase and a sphingolipid C4-hydroxylase., induction: Up-regulated during keratinocyte differentiation. Not expressed at day 0 or day 3 after differentiation, detected on day 6 and increases by day 9., pathway: Membrane lipid metabolism; sphingolipid biosynthesis., similarity: Belongs to the fatty acid desaturase family. DEGS subfamily., tissue specificity: Highly expressed in skin, intestine and kidney.,
Background	This gene encodes a bifunctional enzyme that is involved in the biosynthesis of phytosphingolipids in human skin and in other phytosphingolipid-containing tissues. This enzyme can act as a sphingolipid delta(4)-desaturase, and also as a sphingolipid C4-hydroxylase. [provided by RefSeq, Oct 2008],
matters needing attention	Avoid repeated freezing and thawing!

**Usage suggestions**

This product can be used in immunological reaction related experiments. For more information, please consult technical personnel.

Products Images

Western blot analysis of lysates from MCF-7 cells,
primary antibody was diluted at 1:1000, 4° over night