

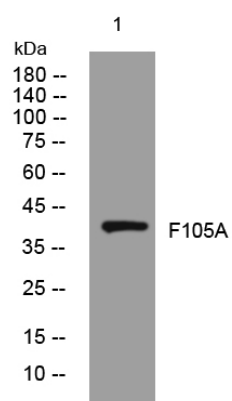


F105A rabbit pAb

Catalog No	YP-Ab-10979
Isotype	IgG
Reactivity	Human; Mouse; Rat
Applications	WB
Gene Name	FAM105A
Protein Name	F105A
Immunogen	Synthesized peptide derived from human F105A AA range: 88-138
Specificity	This antibody detects endogenous levels of F105A at Human/Mouse/Rat
Formulation	Liquid in PBS containing 50% glycerol, 0.5% BSA and 0.02% sodium azide.
Source	Polyclonal, Rabbit, IgG
Purification	The antibody was affinity-purified from rabbit serum by affinity-chromatography using specific immunogen.
Dilution	WB 1: 500-2000
Concentration	1 mg/ml
Purity	≥90%
Storage Stability	-20°C/1 year
Synonyms	
Observed Band	
Cell Pathway	Cytoplasm . Endoplasmic reticulum membrane ; Peripheral membrane protein . Nucleus envelope .
Tissue Specificity	
Function	similarity: Belongs to the FAM105 family.,
Background	
matters needing attention	Avoid repeated freezing and thawing!
Usage suggestions	This product can be used in immunological reaction related experiments. For more information, please consult technical personnel.



Products Images



Western blot analysis of lysates from VEC cells,
primary antibody was diluted at 1:1000, 4° over night