



# CPSF1 rabbit pAb

<b>Catalog No</b>	YP-Ab-10977
<b>Isotype</b>	IgG
<b>Reactivity</b>	Human; Mouse
<b>Applications</b>	WB
<b>Gene Name</b>	CPSF1 CPSF160
<b>Protein Name</b>	CPSF1
<b>Immunogen</b>	Synthesized peptide derived from human CPSF1 AA range: 564-614
<b>Specificity</b>	This antibody detects endogenous levels of CPSF1 at Human/Mouse
<b>Formulation</b>	Liquid in PBS containing 50% glycerol, 0.5% BSA and 0.02% sodium azide.
<b>Source</b>	Polyclonal, Rabbit,IgG
<b>Purification</b>	The antibody was affinity-purified from rabbit serum by affinity-chromatography using specific immunogen.
<b>Dilution</b>	WB 1: 500-2000
<b>Concentration</b>	1 mg/ml
<b>Purity</b>	≥90%
<b>Storage Stability</b>	-20°C/1 year
<b>Synonyms</b>	
<b>Observed Band</b>	
<b>Cell Pathway</b>	Nucleus, nucleoplasm.
<b>Tissue Specificity</b>	Widely expressed, with high expression in the retina.
<b>Function</b>	function:Component of the cleavage and polyadenylation specificity factor (CPSF) complex that plays a key role in pre-mRNA 3'-end formation, recognizing the AAUAAA signal sequence and interacting with poly(A) polymerase and other factors to bring about cleavage and poly(A) addition. This subunit is involved in the RNA recognition step of the polyadenylation reaction.,PTM:The N-terminus is blocked.,similarity:Belongs to the CPSF1 family.,subunit:Component of the cleavage and polyadenylation specificity factor (CPSF) complex, composed of CPSF1, CPSF2, CPSF3, CPSF4 and FIP1L1. Found in a complex with CPSF1, FIP1L1 and PAPOLA. Interacts with FIP1L1, PAPD4/GLD2 and SRRM1.,
<b>Background</b>	Cleavage and polyadenylation specificity factor (CPSF) is a multisubunit complex that plays a central role in 3-prime processing of pre-mRNAs. CPSF recognizes the AAUAAA signal in the pre-mRNA and interacts with other proteins to facilitate both RNA cleavage and poly(A) synthesis. CPSF1 is the largest subunit of the CPSF complex (Murthy and Manley, 1995 [PubMed 7590244]).[supplied by OMIM, Mar 2008],

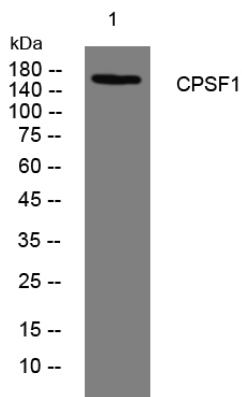
**matters needing attention**

Avoid repeated freezing and thawing!

**Usage suggestions**

This product can be used in immunological reaction related experiments. For more information, please consult technical personnel.

## Products Images



Western blot analysis of lysates from DU145 cells, primary antibody was diluted at 1:1000, 4° over night