

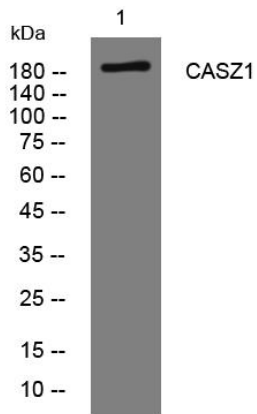


CASZ1 rabbit pAb

Catalog No	YP-Ab-10971
Isotype	IgG
Reactivity	Human; Mouse
Applications	WB
Gene Name	CASZ1 CST SRG ZNF693
Protein Name	CASZ1
Immunogen	Synthesized peptide derived from human CASZ1 AA range: 1413-1463
Specificity	This antibody detects endogenous levels of CASZ1 at Human/Mouse
Formulation	Liquid in PBS containing 50% glycerol, 0.5% BSA and 0.02% sodium azide.
Source	Polyclonal, Rabbit,IgG
Purification	The antibody was affinity-purified from rabbit serum by affinity-chromatography using specific immunogen.
Dilution	WB 1: 500-2000
Concentration	1 mg/ml
Purity	≥90%
Storage Stability	-20°C/1 year
molecular weight	193kD
Observed Band	
Cell Pathway	Nucleus .
Tissue Specificity	Expressed in heart, lung, skeletal muscle, pancreas, testis, small intestine, and stomach, but it is not detectable in the adult brain.
Function	function:Probable transcription factor.,similarity:Contains 8 C2H2-type zinc fingers.,tissue specificity:Expressed in heart, lung, skeletal muscle, pancreas, testis, small intestine, and stomach, but it is not detectable in the adult brain.,
Background	The protein encoded by this gene is a zinc finger transcription factor. The encoded protein may function as a tumor suppressor, and single nucleotide polymorphisms in this gene are associated with blood pressure variation. Alternative splicing results in multiple transcript variants that encode different protein isoforms. [provided by RefSeq, Jul 2012],
matters needing attention	Avoid repeated freezing and thawing!
Usage suggestions	This product can be used in immunological reaction related experiments. For more information, please consult technical personnel.



Products Images



Western blot analysis of lysates from 293T cells,
primary antibody was diluted at 1:1000, 4° over night