

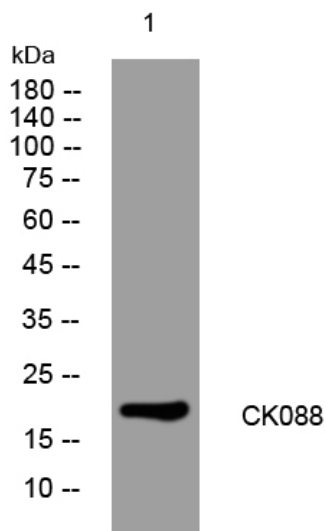


CK088 rabbit pAb

Catalog No	YP-Ab-10941
Isotype	IgG
Reactivity	Human; Mouse
Applications	WB
Gene Name	C11orf88
Protein Name	CK088
Immunogen	Synthesized peptide derived from human CK088 AA range: 15-65
Specificity	This antibody detects endogenous levels of CK088 at Human/Mouse
Formulation	Liquid in PBS containing 50% glycerol, 0.5% BSA and 0.02% sodium azide.
Source	Polyclonal, Rabbit,IgG
Purification	The antibody was affinity-purified from rabbit serum by affinity-chromatography using specific immunogen.
Dilution	WB 1: 500-2000
Concentration	1 mg/ml
Purity	≥90%
Storage Stability	-20°C/1 year
Synonyms	
Observed Band	
Cell Pathway	Cytoplasm . Cell projection, cilium .
Tissue Specificity	
Function	similarity:Belongs to the UPF0722 family.,
Background	
matters needing attention	Avoid repeated freezing and thawing!
Usage suggestions	This product can be used in immunological reaction related experiments. For more information, please consult technical personnel.



Products Images



Western blot analysis of lysates from 3T3 cells, primary antibody was diluted at 1:1000, 4°over night