

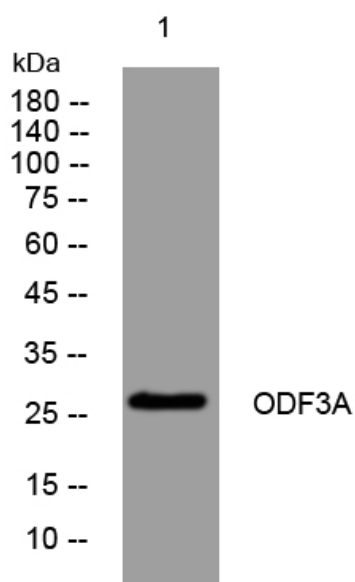


ODF3A rabbit pAb

Catalog No	YP-Ab-10940
Isotype	IgG
Reactivity	Human; Mouse
Applications	WB
Gene Name	ODF3 SHIPPO1 TISP50
Protein Name	ODF3A
Immunogen	Synthesized peptide derived from human ODF3A AA range: 160-210
Specificity	This antibody detects endogenous levels of ODF3A at Human/Mouse
Formulation	Liquid in PBS containing 50% glycerol, 0.5% BSA and 0.02% sodium azide.
Source	Polyclonal, Rabbit,IgG
Purification	The antibody was affinity-purified from rabbit serum by affinity-chromatography using specific immunogen.
Dilution	WB 1: 500-2000
Concentration	1 mg/ml
Purity	≥90%
Storage Stability	-20°C/1 year
Synonyms	
Observed Band	
Cell Pathway	Cytoplasm . Expressed in the cytoplasmic lobe of spermatids. .
Tissue Specificity	Testis-specific.
Function	function:Outer dense fibers are filamentous structures located on the outside of the axoneme in the midpiece and principal piece of the mammalian sperm tail. May help to maintain the passive elastic structures and elastic recoil of the sperm tail.,miscellaneous:'Shippo' is a Japanese word for tail.,similarity:Belongs to the ODF3 family.,similarity:Contains 2 DUF1309 repeats.,subcellular location:Expressed in the cytoplasmic lobe of spermatids.,tissue specificity:Testis-specific.,
Background	ODF3 is a component of sperm flagella outer dense fibers, which add stiffness, elastic recoil, and protection against shearing forces during sperm movement.[supplied by OMIM, Apr 2004],
matters needing attention	Avoid repeated freezing and thawing!

**Usage suggestions**

This product can be used in immunological reaction related experiments. For more information, please consult technical personnel.

Products Images

Western blot analysis of lysates from HCT116 cells,
primary antibody was diluted at 1:1000, 4°over night